



Updating the coastline and wide rivers for IS 50V

Saulius Prizginas
(Jóhann Helgason)
Landmælingar Íslands

The old IS 50V coastline





Updating the coastline

□ Priorities

- main body – fully updated
- largest islands – partially or fully updated
- small islands, reefs, skerries - partially updated (improved location)

□ Methods

- automatic extraction
- screen digitizing 



Updating the coastline

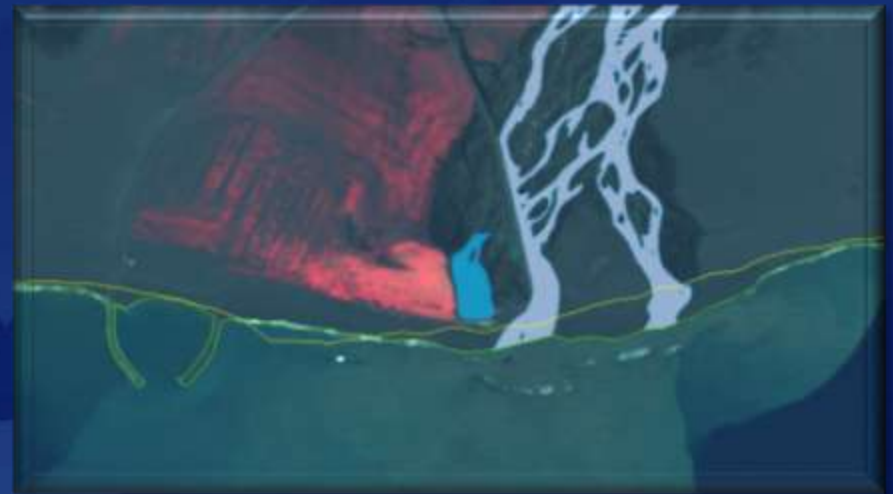
□ Update resources

- the SPOT-5 imagery (full coverage)
- aerial photos (limited availability)
- Other (for non-updated parts)

□ The results

- the shape and attributes updated (man-made pieces, closing lines, new sources, higher accuracy, etc.)
- new frame for other layers (boundaries, water network, vegetation, etc.)

The updated coastline





Updating the wide rivers

□ Stage 1

- new glacier outlines (Corine, new Spot-5 pictures)

□ Stage 2

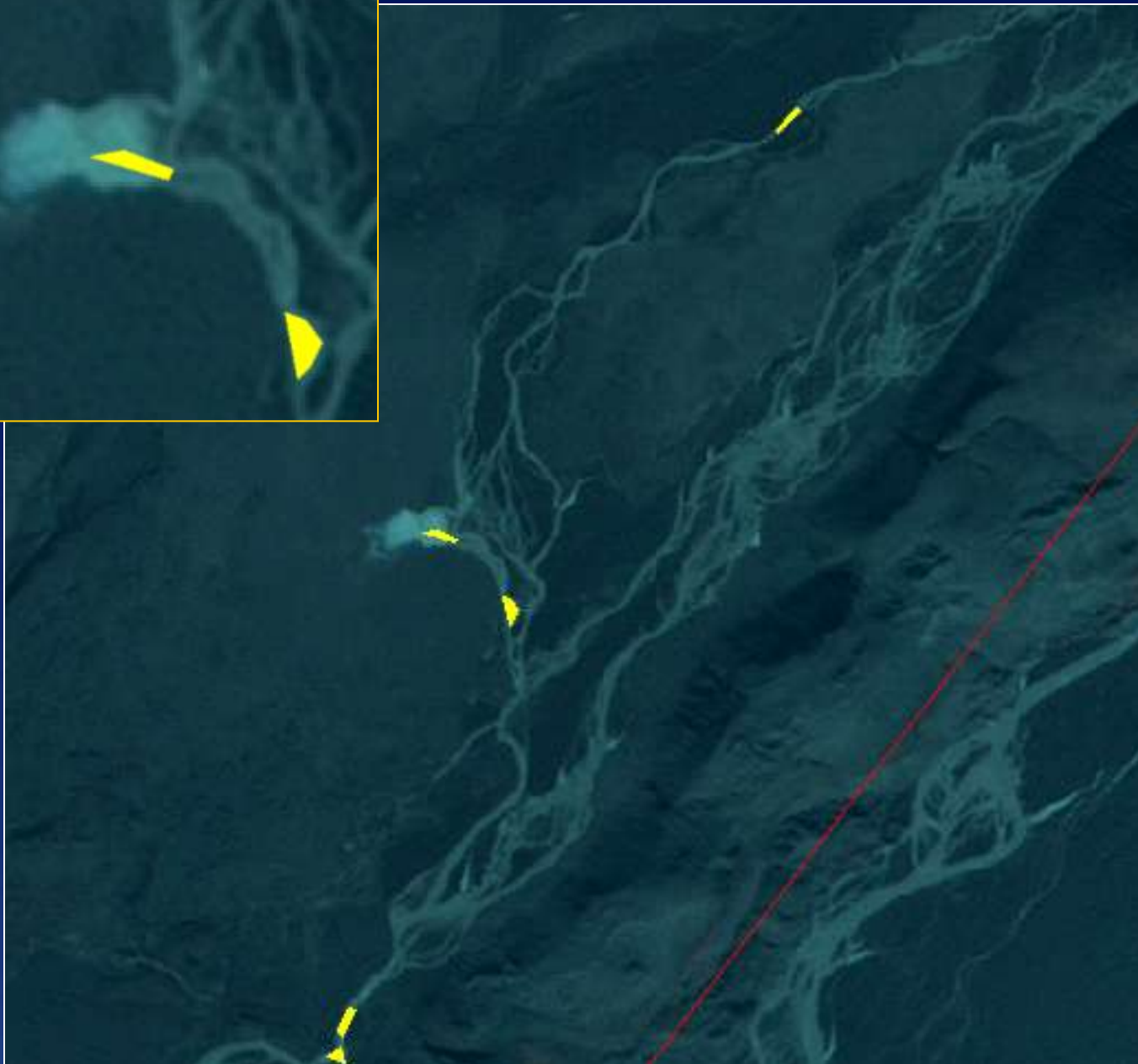
- new coastline and related updates
 - update areas estimated
 - feature extraction method chosen

Updating the wide rivers

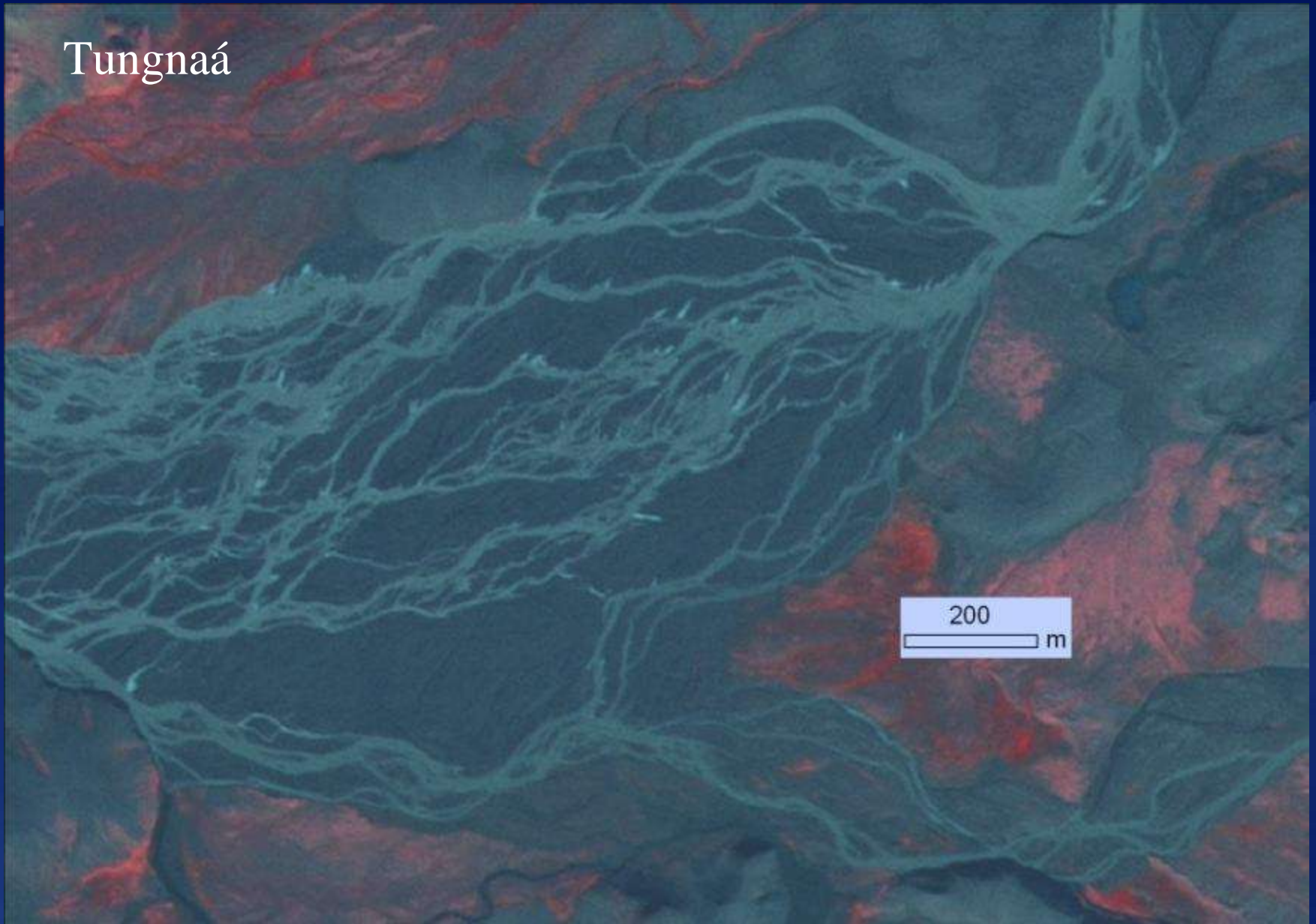


The updates buffer





Tungnaá



Hrá gögn til úrvinnslu



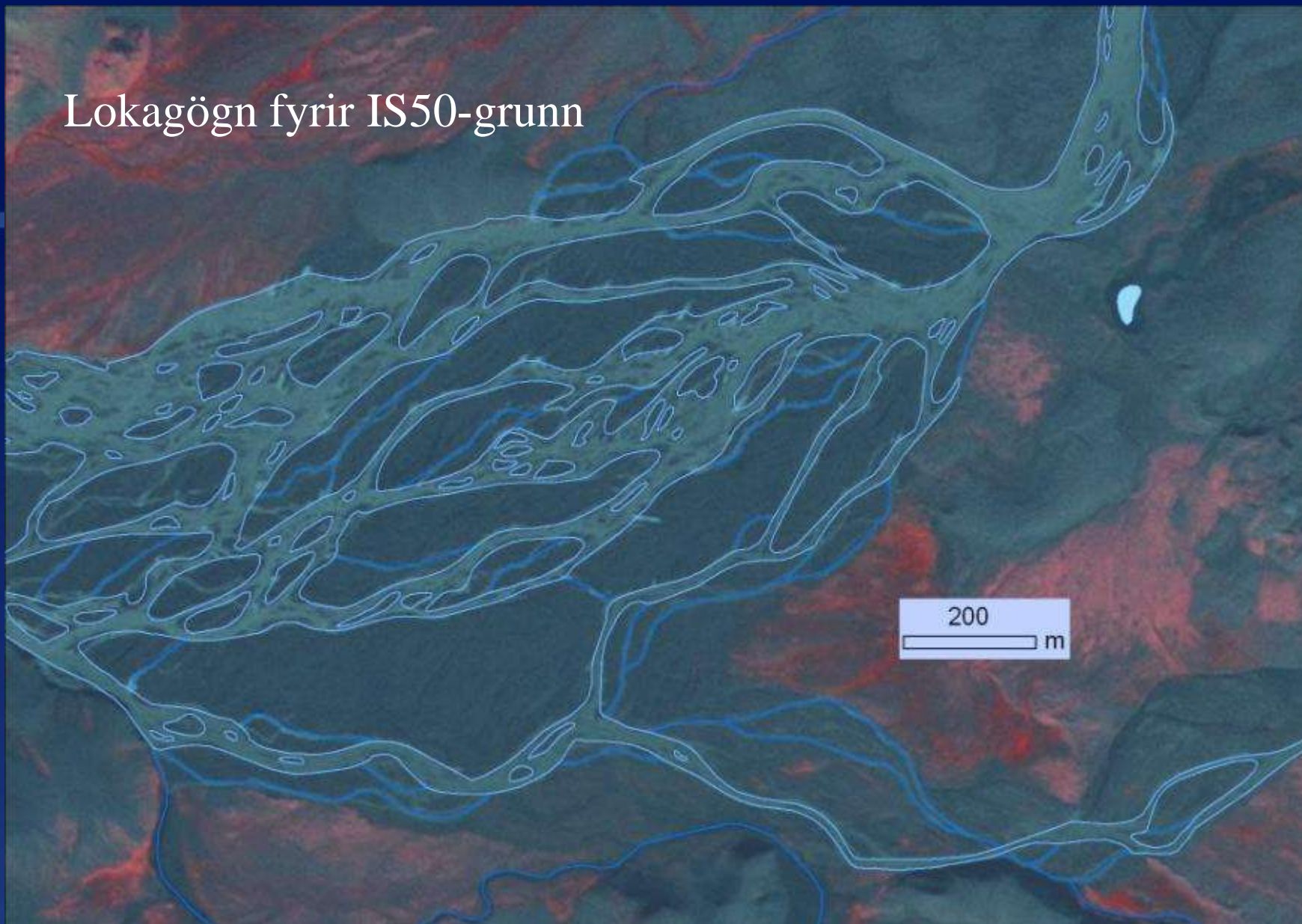
Tungnaá

Flákar hafa verið einfaldaðir og bútar fjarlægðir



Tungnaá

Lokagögn fyrir IS50-grunn



200
m

Tungnaá

Updating the wide rivers



Quick facts about the updates



- ❖ although the updated area is relatively small, the amount of surface of wide rivers updated is around 45% of the whole dataset
- ❖ The height model (contour lines) is accounted for when drawing the rivers
- ❖ It took around 4-5 months for a team of 2-4 people to complete both update areas



Takk fyrir