

# Uppfærsla á hæðarlínum í IS 50V

Ásta Kr. Óladóttir  
Jóhann Helgason

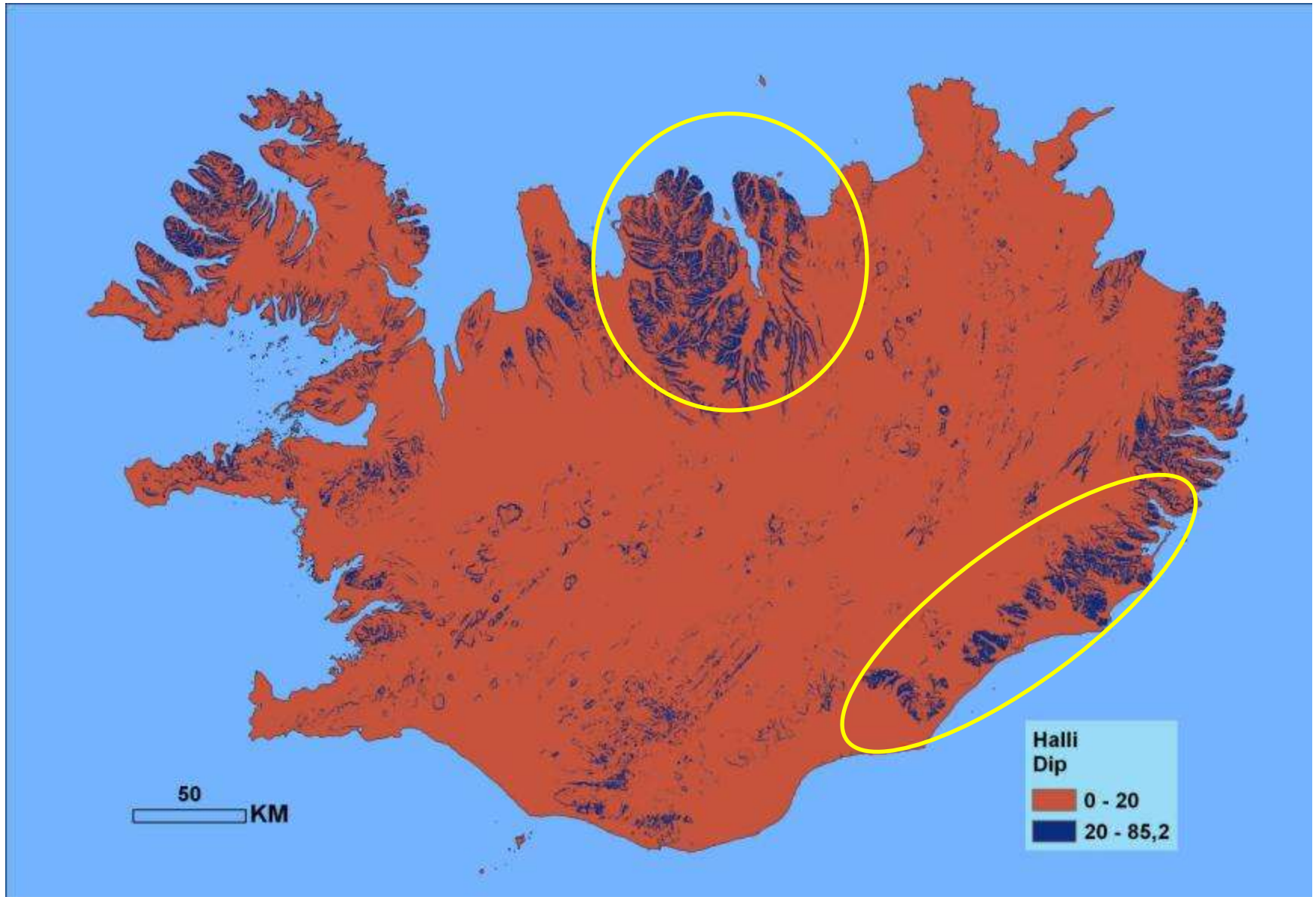
# Yfirlit

➤ Nákvæmnismat

➤ Aðferðir

➤ Gögn

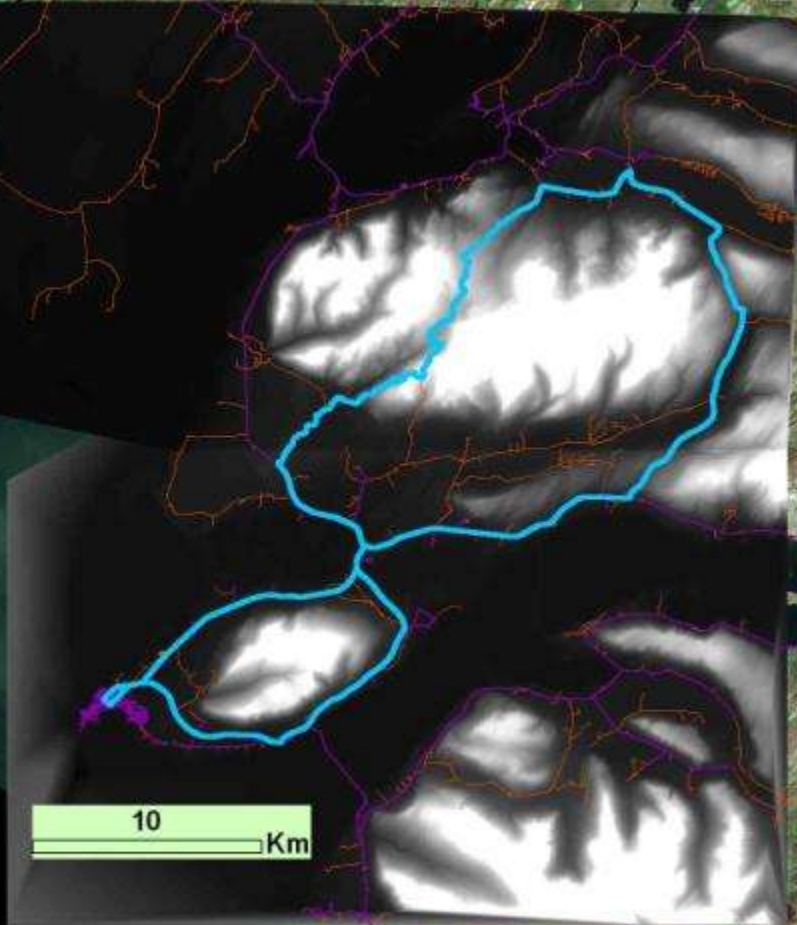
# Hallagreining



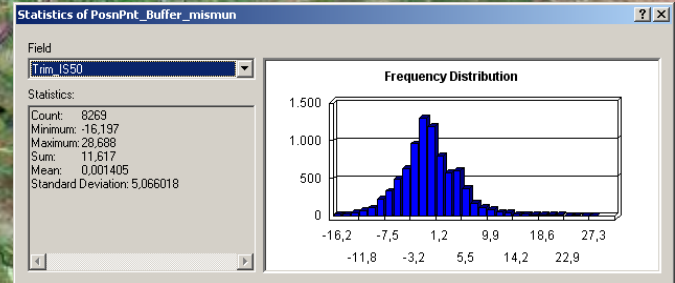
# Hvernig eru gæði gagna metin?

- Gæði gagnasetta eru borin saman, t.d. svæði A og B, þar sem A er IS50V-hæðarlínur en svæði B eru möguleg ný gögn
- Fyrir hvert hæðarlínulag er gert TIN og síðan DEM-lag, þ.e. rasti með 20 m pixilstærð og hefur hver pixill hæðargildi
- Hæðargildi í rasta B eru dregin frá gildum í rasta A
- Mismunurinn settur fram á nýjum “mismunarasta” með litaskala
- Þannig sést munur gagnasetta A og B
- Til að meta gæði hvers gagnasetts þarf nákvæma hæðarpunkta
- Mældir eru nákvæmlega hæðarpunktar og “rétt Trimble-gildi” (betri en 1 m í hæð, 2000-3000 punktar) borin saman við gildi í DEM rasta

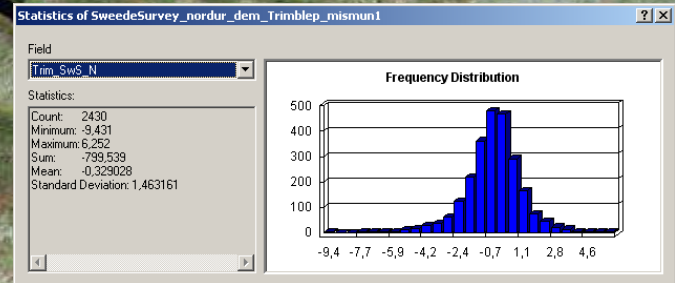
# SweedeSurvey rannsóknarsvæði



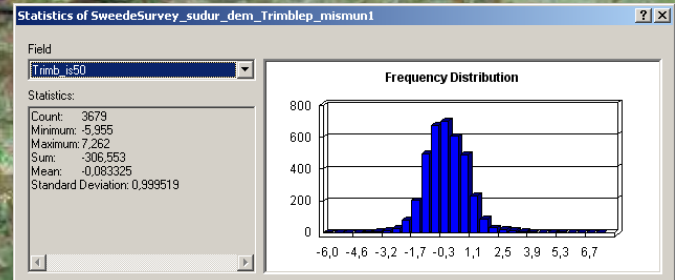
## Trimble - minus IS50V

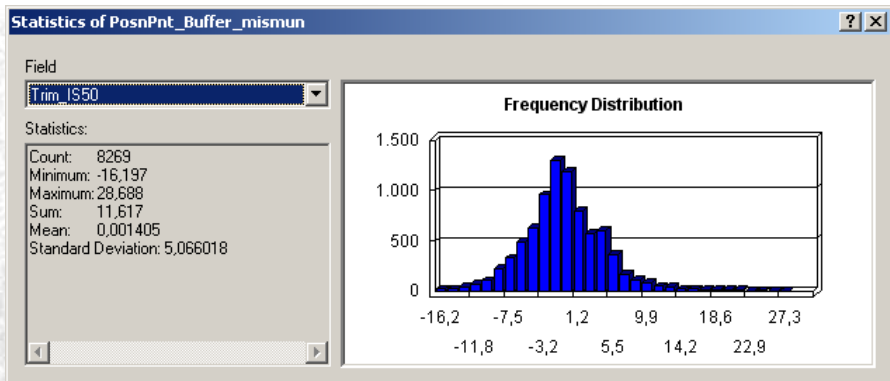


## Trimble - minus SweedeSurvey Norður

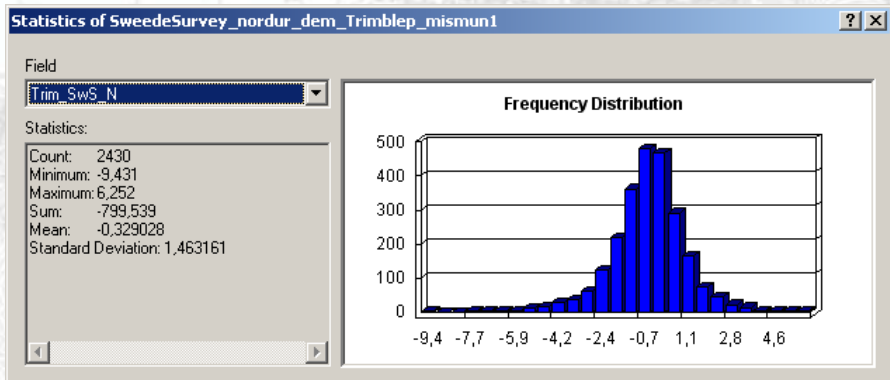


## Trimble - minus SweedeSurvey Suður

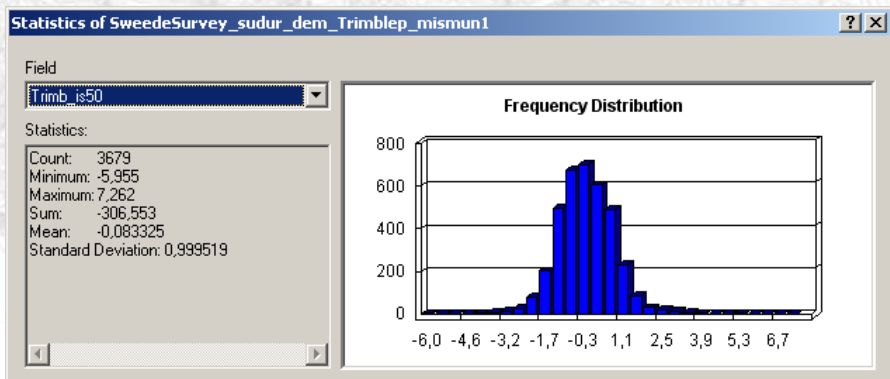




Trimble mínus IS50V  
**5.06 m (1. st.d.)**

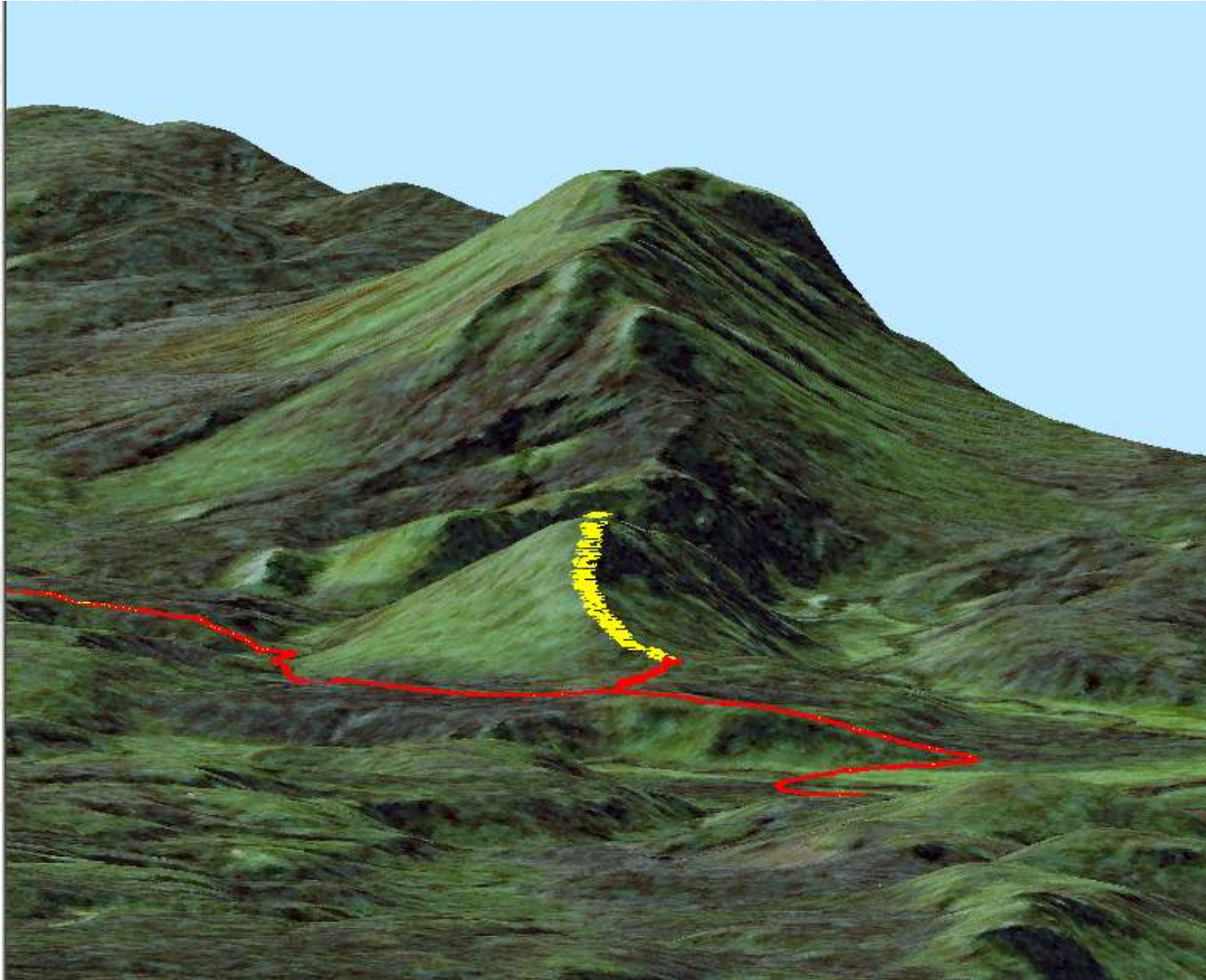


Skarðsheiði–norður: Trimble mínus  
 SweedeSurvey–norður.  
**1.46 m (1. st.d.)**

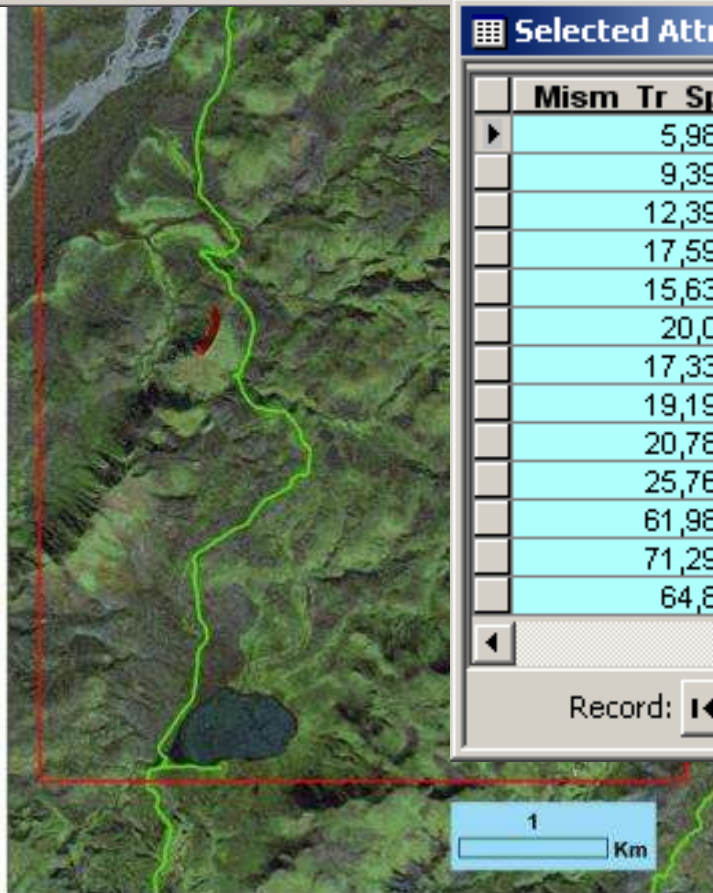
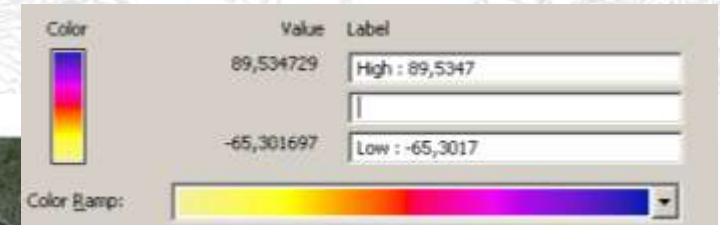
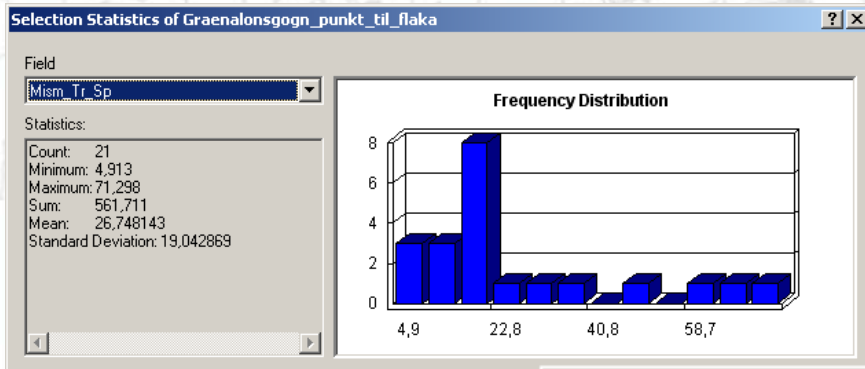


Skarðsheiði–suður: Trimble mínus  
 SweedeSurvey–suður.  
**0.99 m (1. st.d.)**

# Grænafell



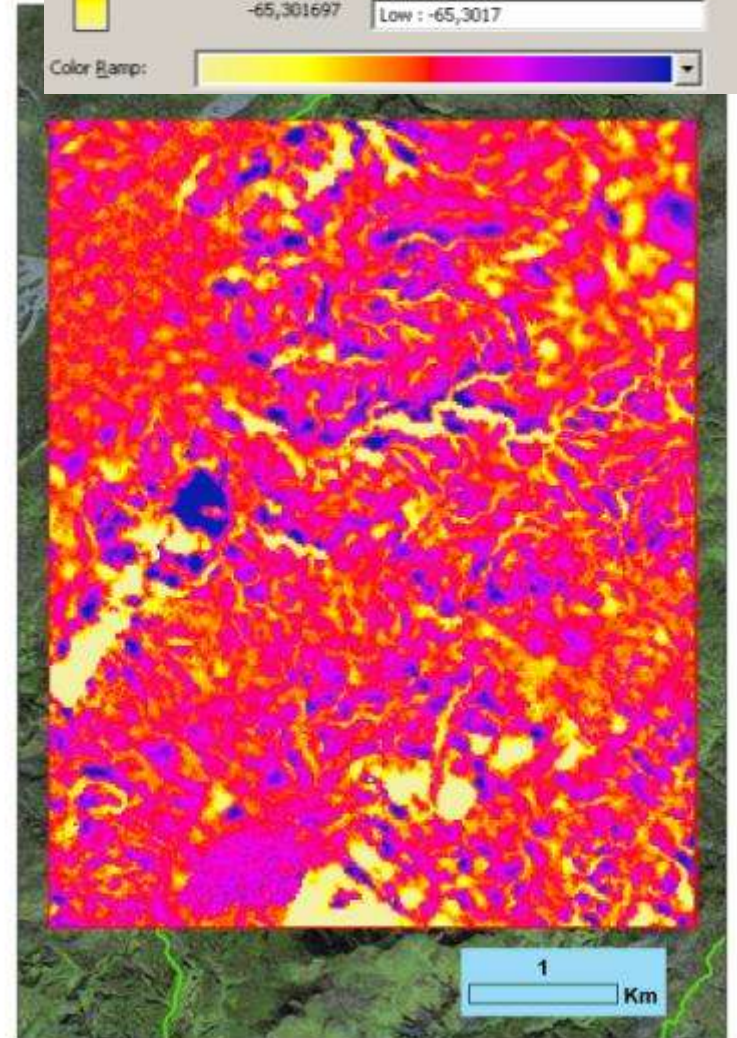
# EMISAR vs. SPOT5



Selected Attribute...

	Mism Tr Sp	Mism Tr Em
▶	5,986	2,1
▶	9,392	4,196
▶	12,391	5,074
▶	17,598	7,386
▶	15,637	5,081
▶	20,03	5,711
▶	17,339	4,415
▶	19,196	5,143
▶	20,785	3,895
▶	25,761	5,29
▶	61,985	6,623
▶	71,298	4,646
▶	64,89	2,996

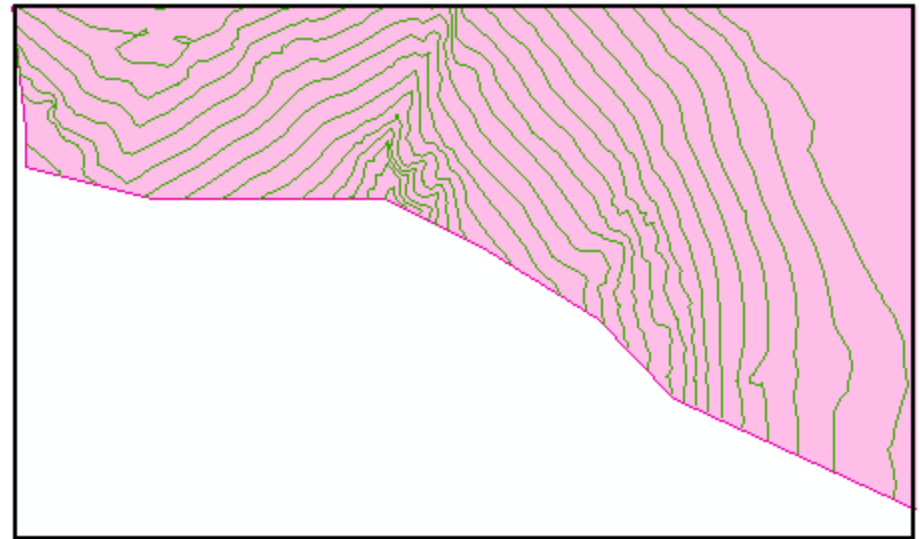
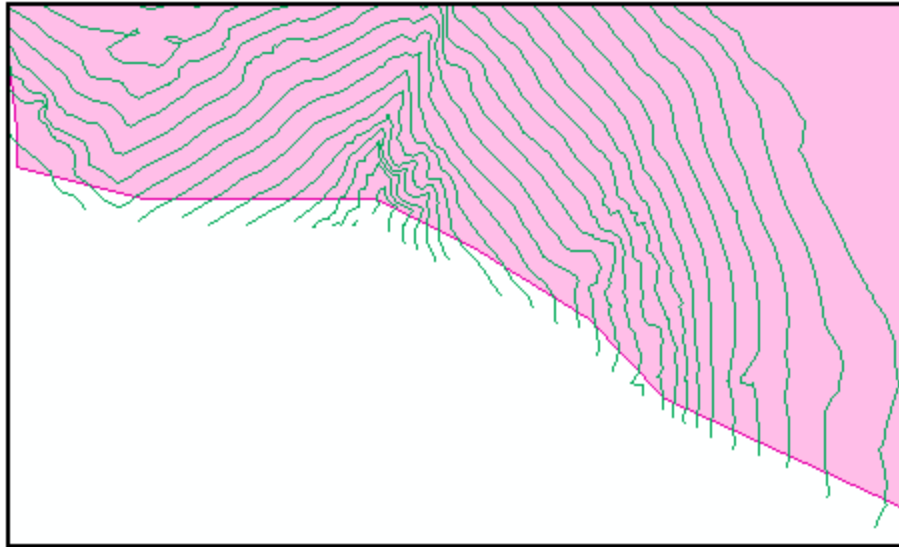
Record: 1





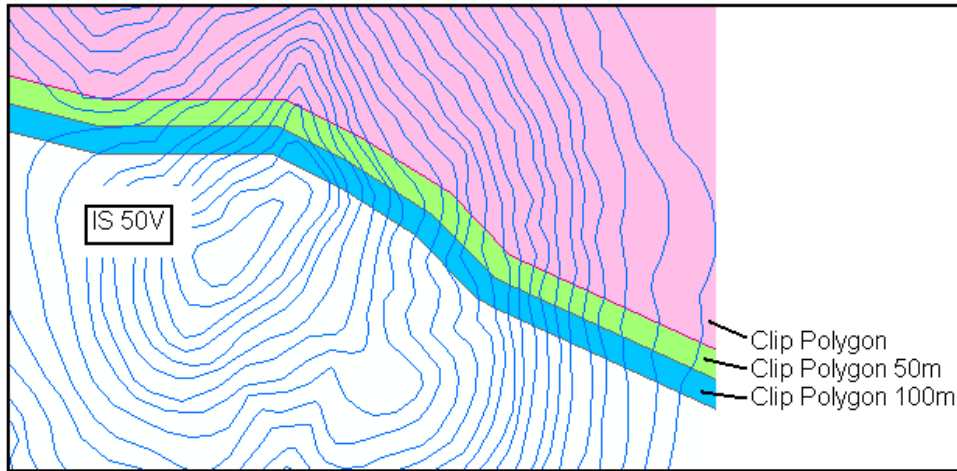
# Aðferðir, innsetning

ArcToolbox > Analysis Tools > Extract > Clip

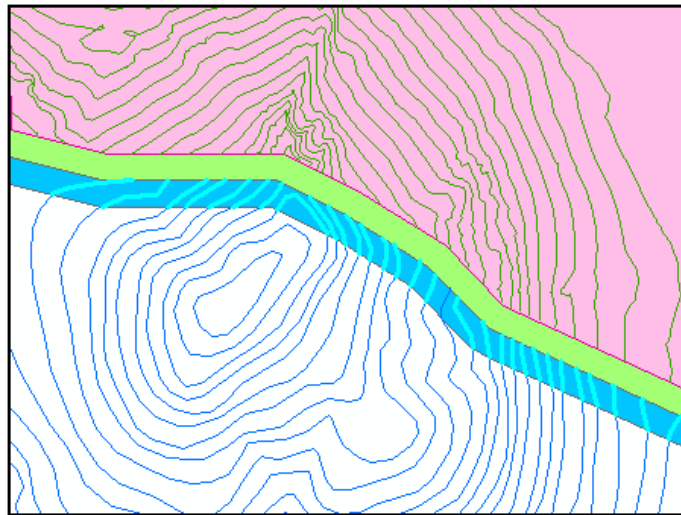


# Aðferðir, innsetning

ArcToolbox > Analysis Tools > Buffer

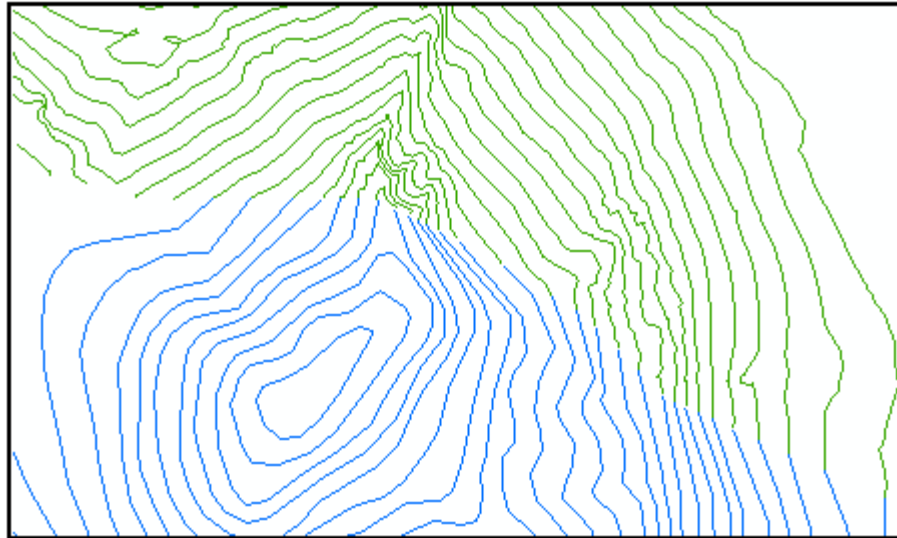


Klippt gat í is 50V með aðferðinni Planarize lines á Topology toolbar

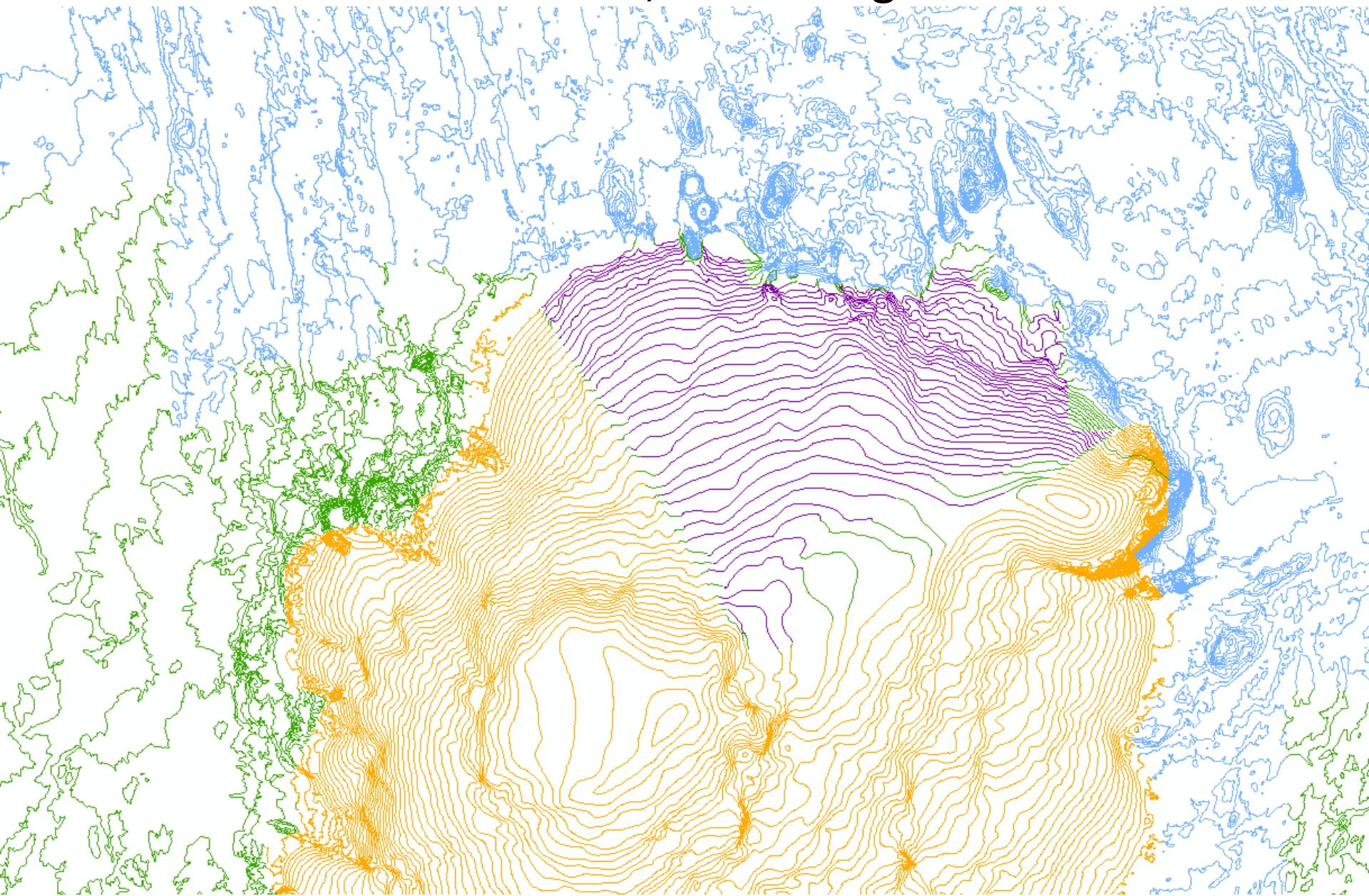


# Aðferðir, innsetning

Tengt með Spatial Adjustment toolbar og handvirkt



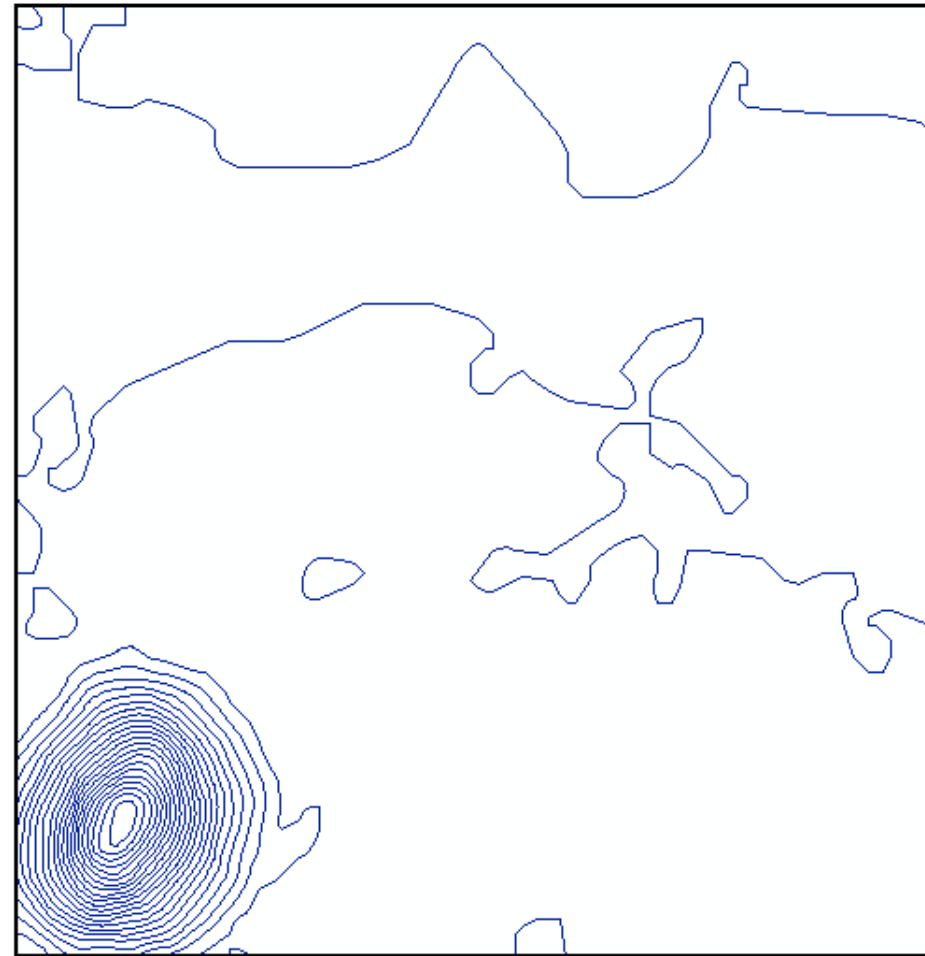
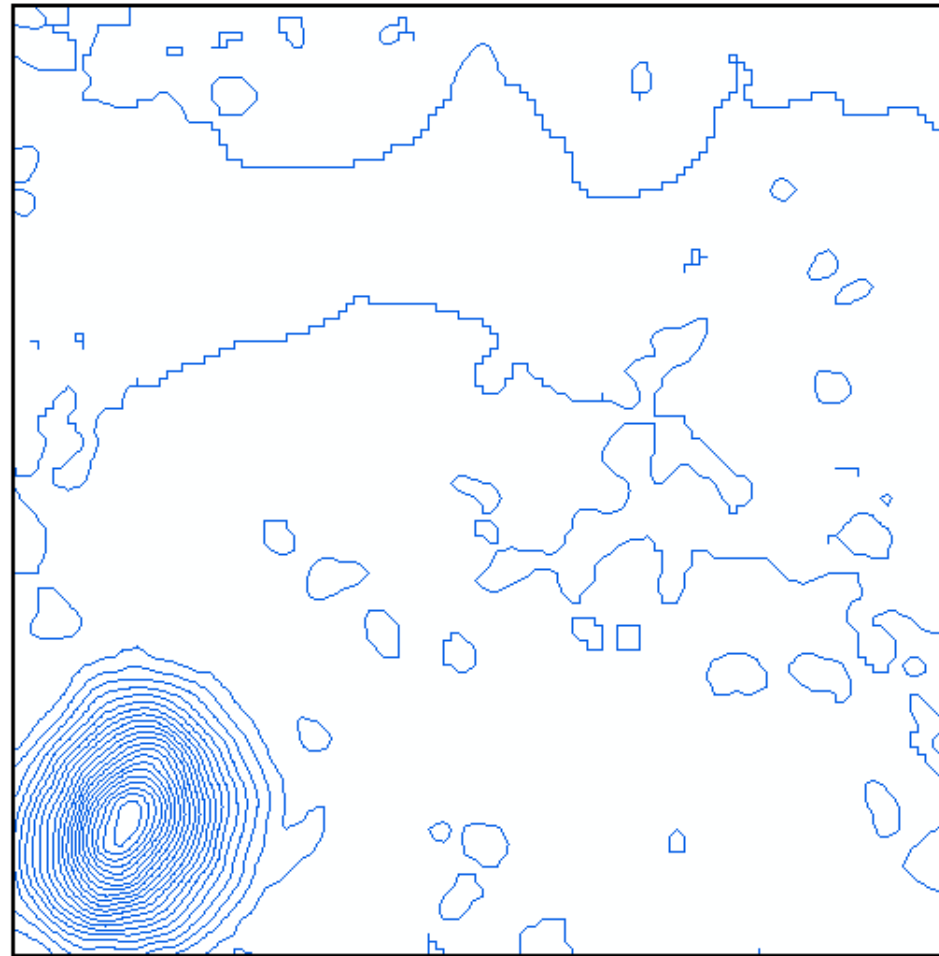
# Aðferðir, innsetning



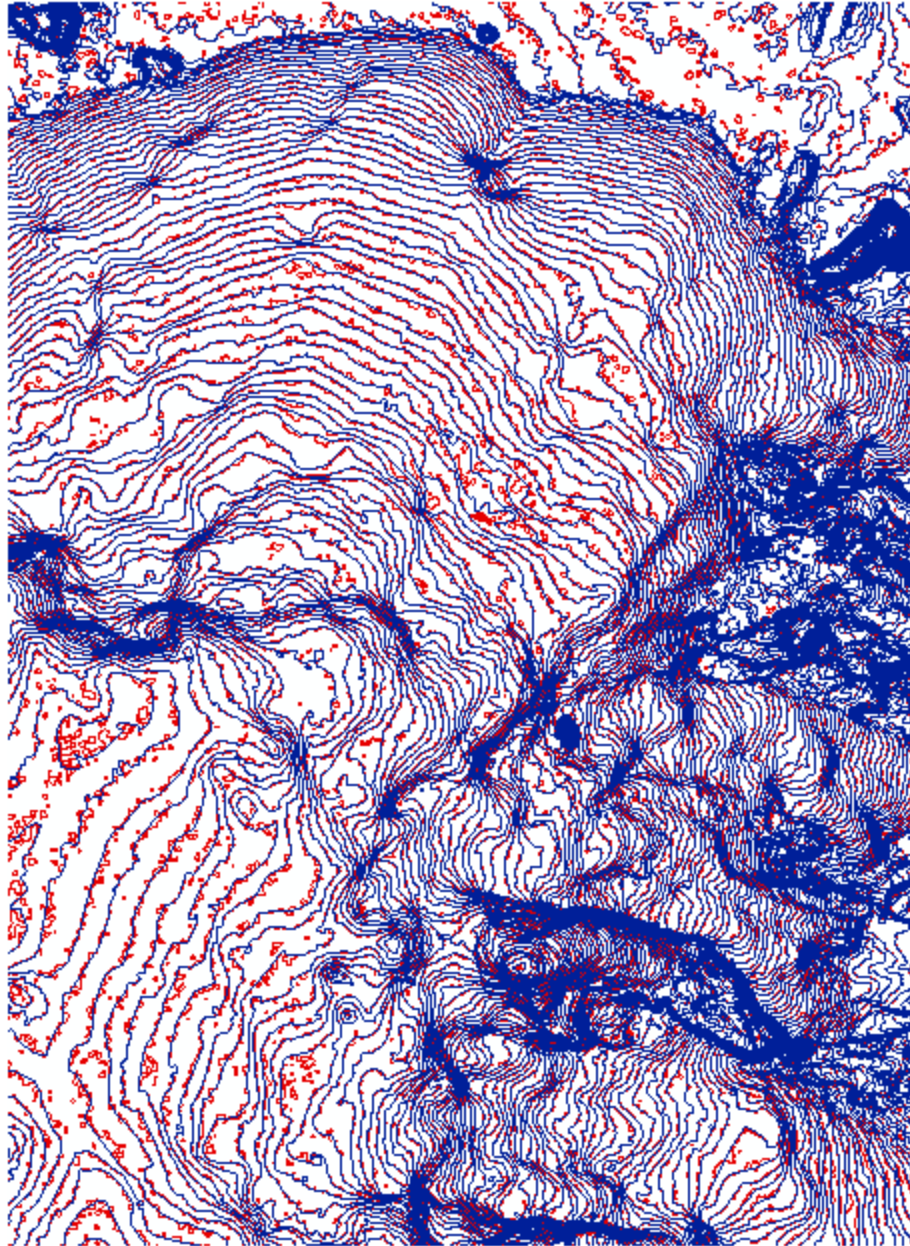
# Aðferðir, einföldun

SPOT

einföldun með ArcToolbox > Data Management Tools  
>Generalization > Simplify Line (bend simplify)

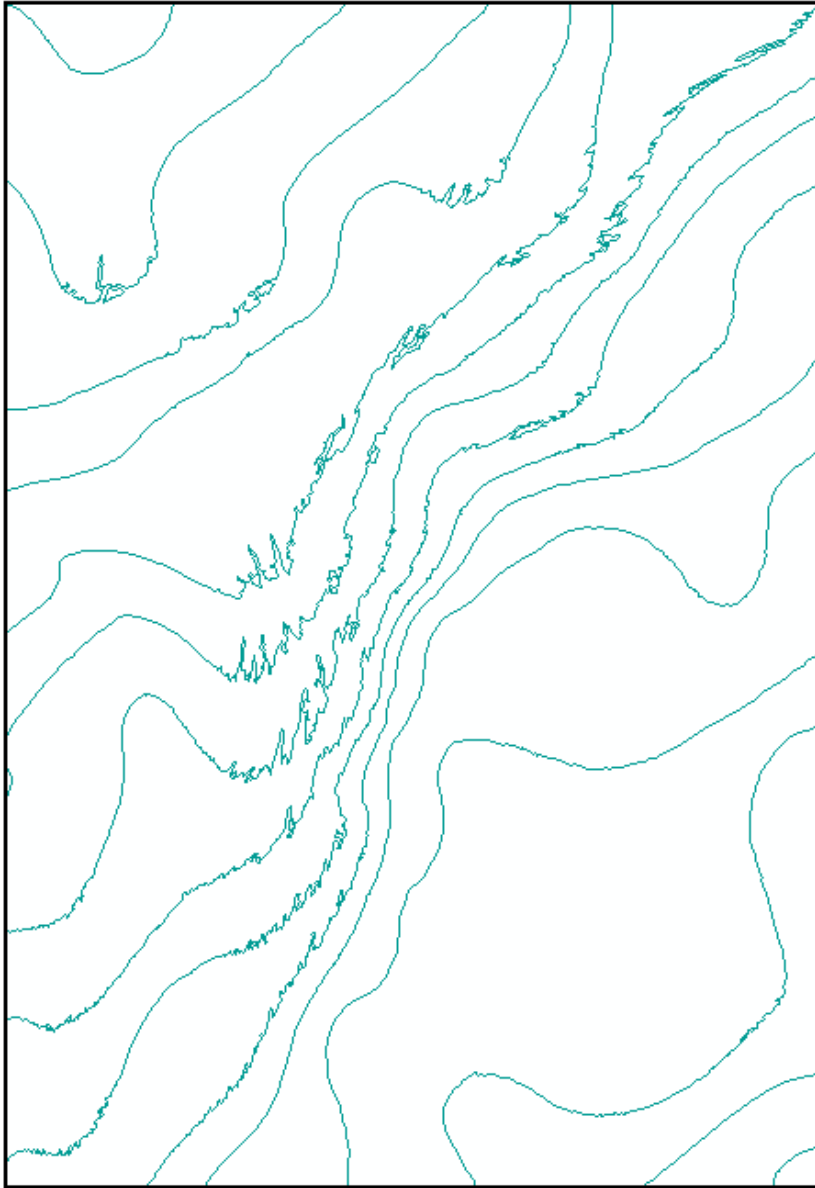


# Aðferðir, einföldun

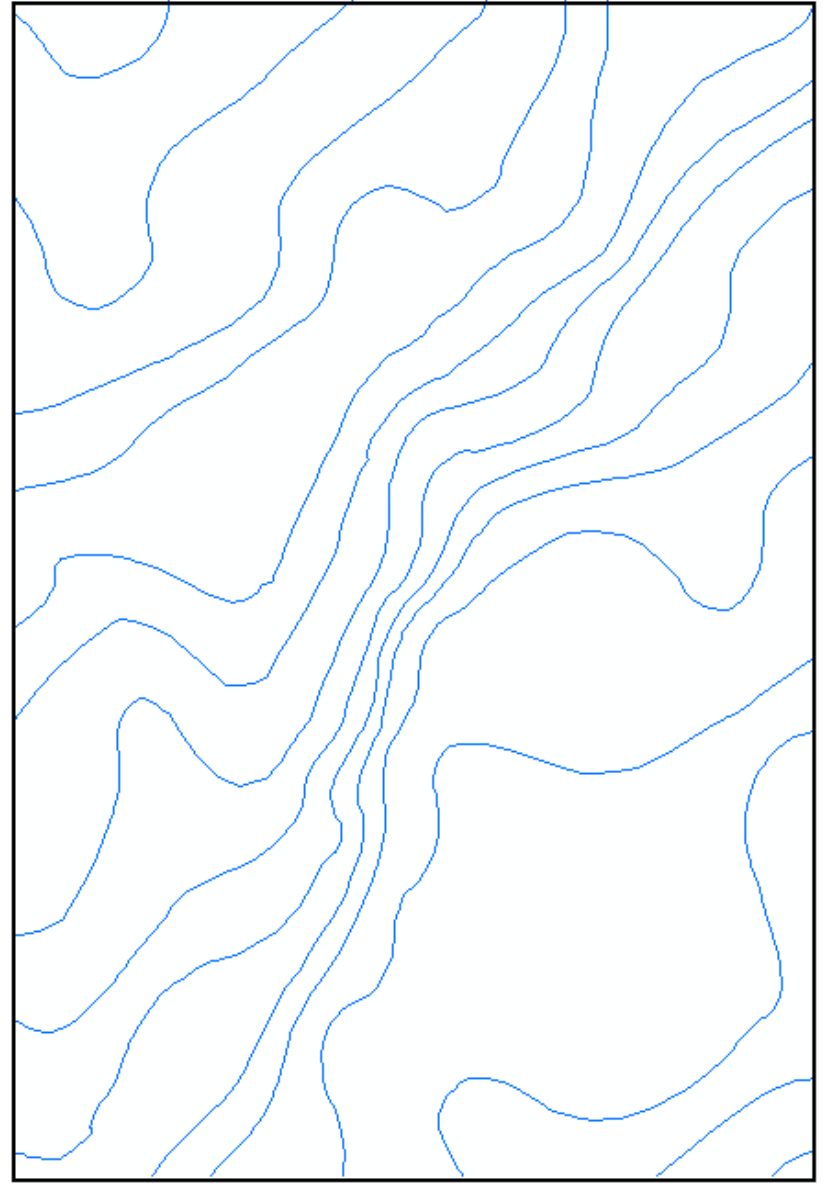


# Aðferðir, einföldun

IPY

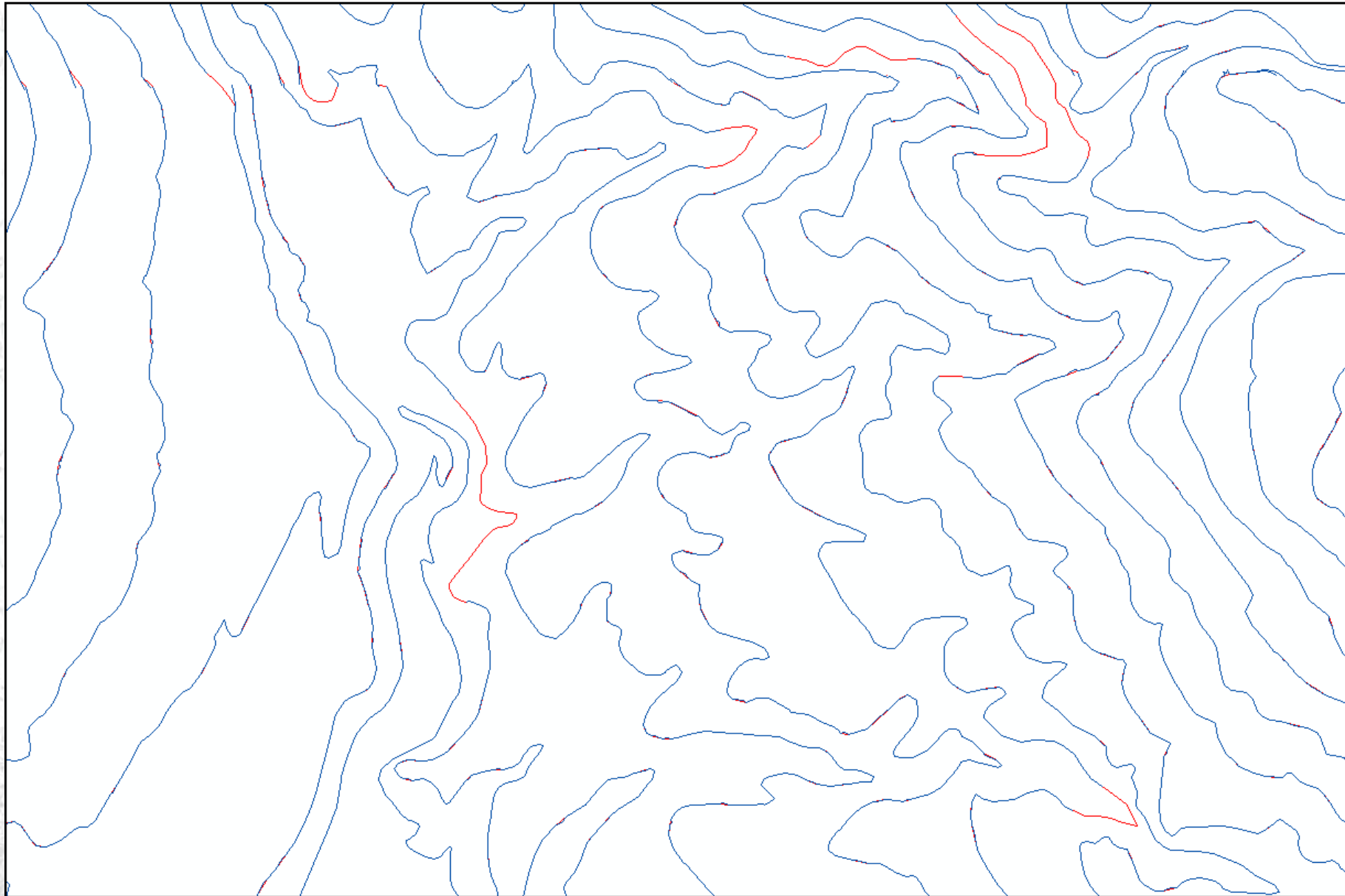


einfaldað



# Grannfræðin

Grannfræðin er löguð með Topology tólum og handvirkt

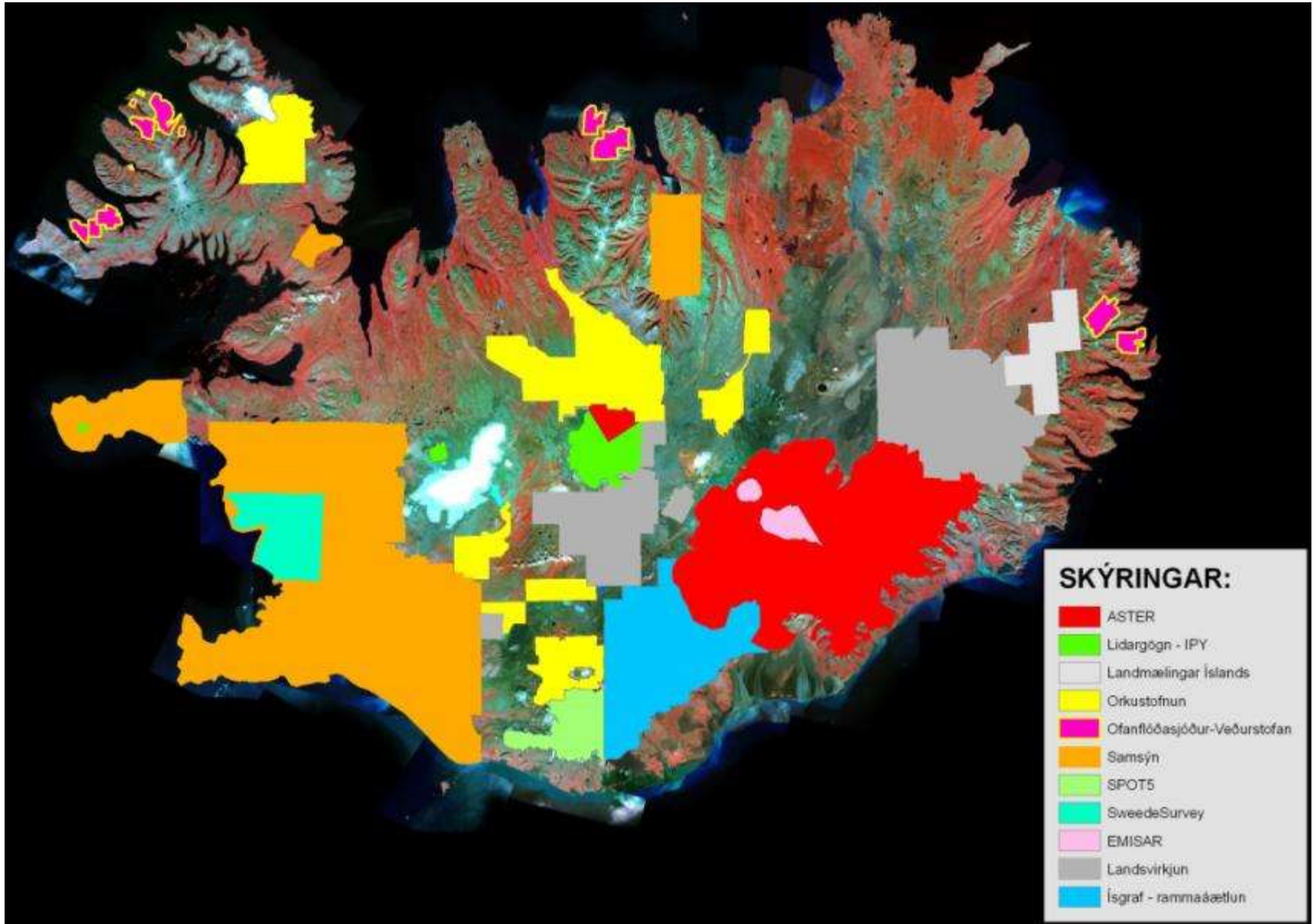


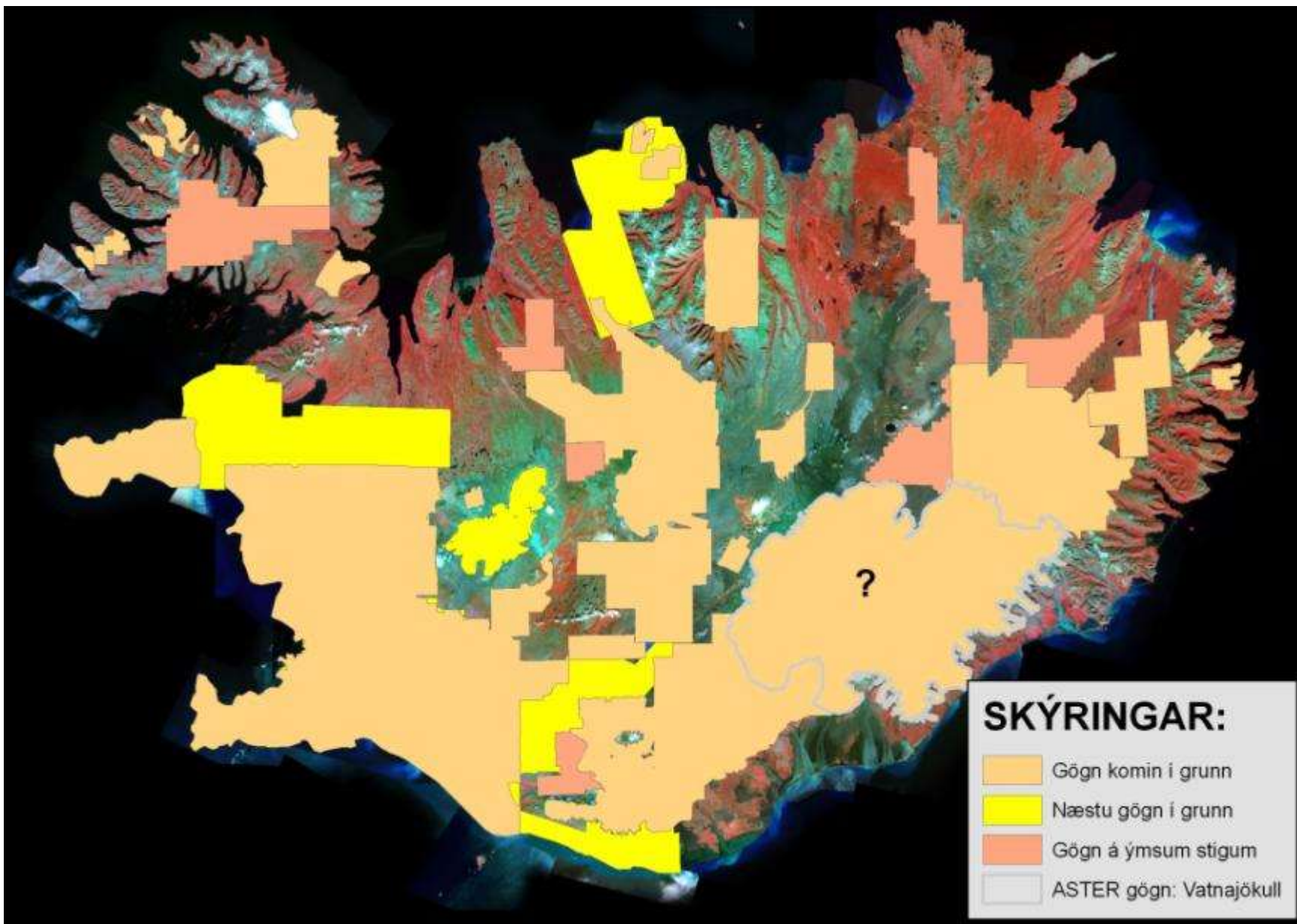


# Eigindi

Eigindi	Útskýring
<i>Fitjutegund</i>	hæðarlínur
<i>Hæðalínu flokkur</i>	20m, 100m
<i>Jafngisdislína</i>	lína í lægð, lína ekki í lægð
<i>Aðstoðarlína</i>	á ekki við, brúun
<i>Ástand</i>	visst, óvisst
<i>Z</i>	á öllum línum
<i>Nafn-F</i>	-----
<i>Lýsing-F</i>	fyrir athugasemdir ef einhverjar eru
<i>vinnsla</i>	hönnunargögn, fjarkönnunargögn, skönnuð gögn og vigrun, skjáhnitun/borðhnitun, landmæling
<i>Heimild</i>	hvaðan eru gögnin
<i>Dags uppruni</i>	hvenær urðu gögnin til
<i>Dags inn</i>	hvenær eru gögn sett inn í IS 50V
<i>Dags leiðrétting</i>	ef um leiðréttingu á gögnum í IS 50V er að ræða
<i>Dags uppfærsla</i>	dálkur fyrir sölugrunninn IS 50V
<i>Nákvæmni</i>	nákvæmni gagna
<i>Gagnaeigandi</i>	eigandi gagna

# Staðan í dag

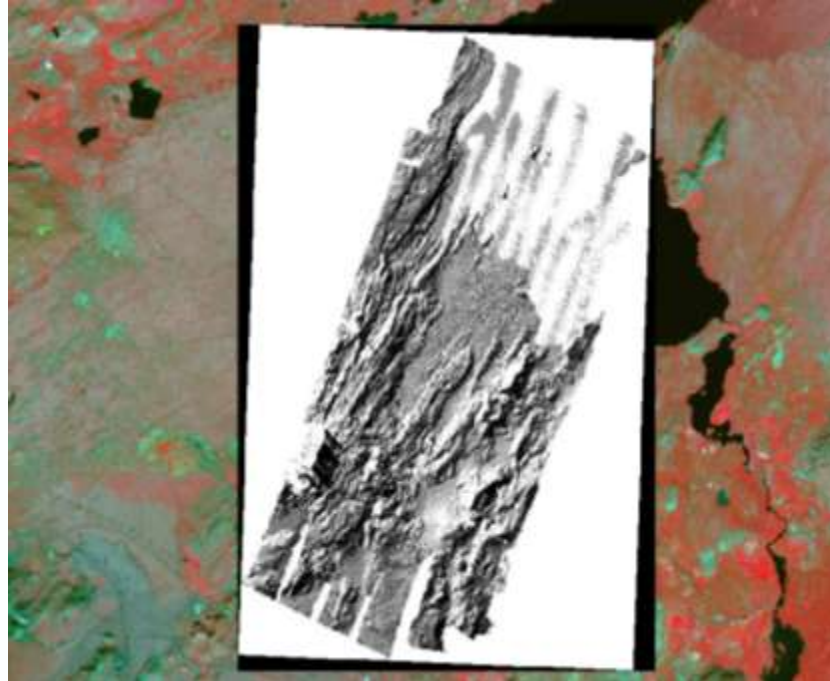




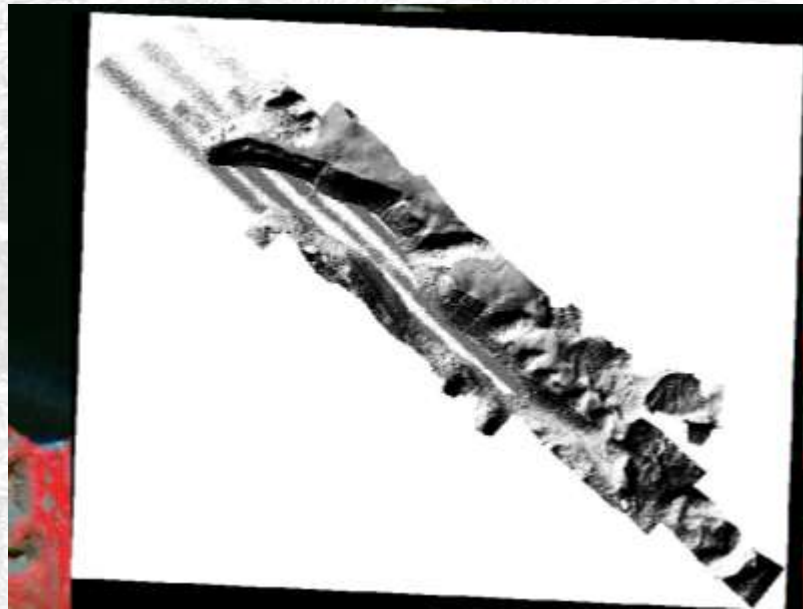
**SKÝRINGAR:**

-  Gögn komin í grunn
-  Næstu gögn í grunn
-  Gögn á ýmsum stigum
-  ASTER gögn: Vatnajökull

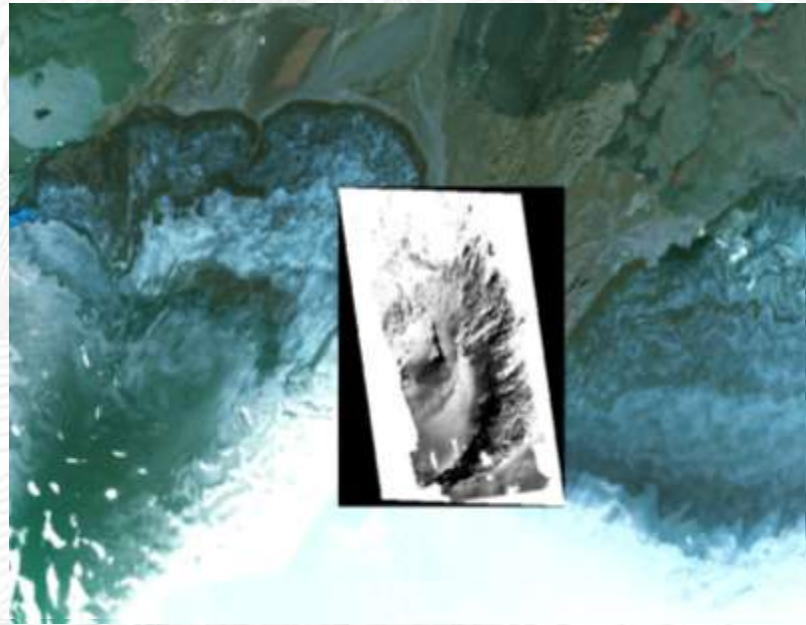
# Hengill - Þingvallavatn



# Súgandafjörður



# Kverkfjöll



# Öræfasveit - Skriðjöklar



TAKK