

Skipulag gagna

Saga Náttúrufræðistofnunar

Anette Th. Meier
Lovísa Ásbjörnsdóttir




INSPIRE Data Models

http://inspire.ec.europa.eu/index.cfm/pageid/2/list/datamodels

INSPIRE > Data Models

Contact | Legal notice | Privacy statement | English (en)



INSPIRE

Infrastructure for Spatial Information in the European Community

European Commission > INSPIRE > Data Specifications

Data Specifications

Legislation Who Consultations Testing Roadmap Library News Themes **Data Models**

INSPIRE data models
The INSPIRE Implementing Rules on interoperability of spatial data sets and services, and the data specification guidance documents are based on the UML data models developed by the INSPIRE Thematic Working Groups. These data models are managed in a common UML repository, which also stores older revisions of the models.

This page makes different revisions of the INSPIRE UML models available in different formats and views (see below). Each of these revisions corresponds to a specific set of (draft or approved) Data Specification Technical Guidance (TG) documents and/or Implementing Rules.

Revision	Corresponding TG and IRs	Status	Feature catalogue	HTML view	Mapping Tables	EA project / XMI	SVN	GML & code lists
4618	This version corresponds to the content of the Implementing Rules (EU) No 1089/2010, No 102/2011, No 1253/2013 and the latest publicly available version of the data specifications of Annex I, II+III.	APPROVED	FC	HTML	Mapping Tables	EA / XMI	SVN	Schema repository

This distribution contains only those data models that are contained in the amendment to the Implementing Rules for Annex II+III themes, including the updates of the Annex I data themes.

Print font size

SEARCH INSPIRE

INSPIRE Documents
INSPIRE Website

OK

LOGIN / REGISTRATION

INSPIRE - Infrastructure for Spatial Information in the European Community

GEOSPATIAL WORLD FORUM


25 - 29 MAY 2015, LISBON, PORTUGAL

34 13 05

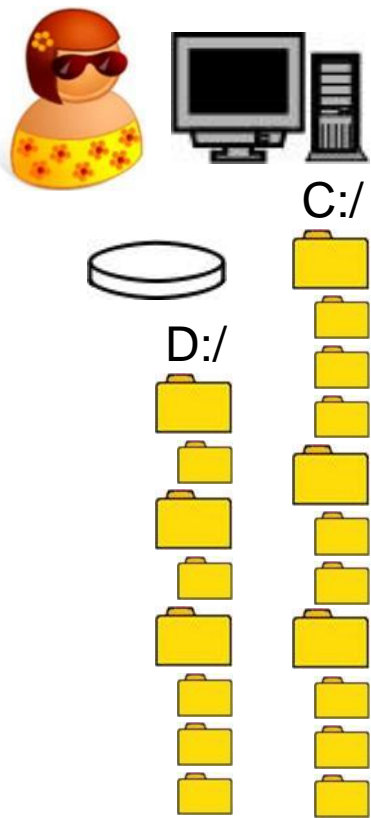
days hours minutes

time left until the INSPIRE-GWF 2015 Conference

INSPIRE



Saga NÍ – once upon a time

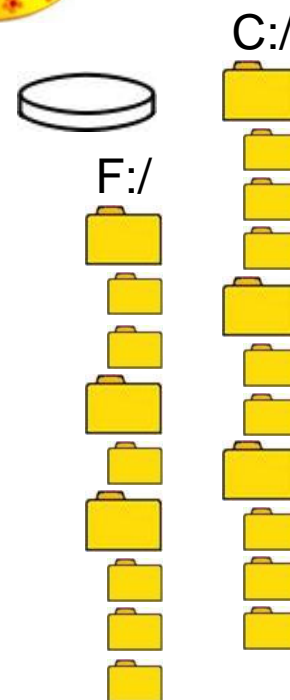
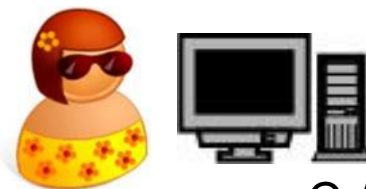
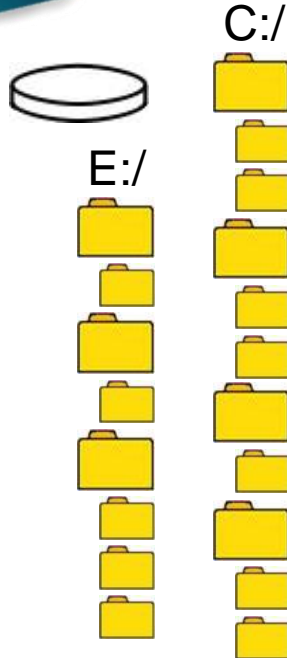
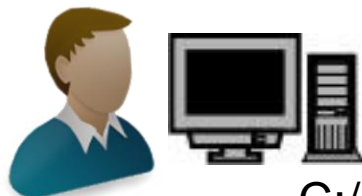
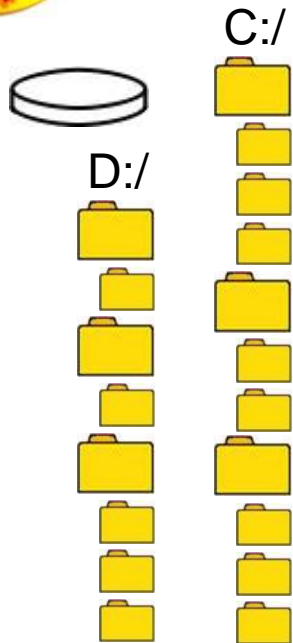


- As digital cartography and IT progressed...
 - Data stored on Hard Drive (per staff member)
 - Overflow stored on additional drives
 - Organized by
 - Year
 - Scientist
 - Project
 - File names not standardized
 - fugl_dd.shp, theme1.shp, eo_allt.shp
 - waypoints.shp, borg_isnet.shp, linur.shp
 - prufu.shp, loka.mxd, lokaLoka.mxd

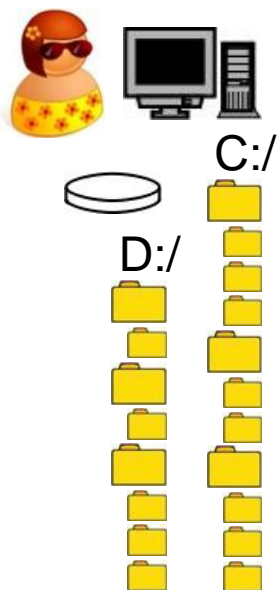


Saga NÍ – once upon a time

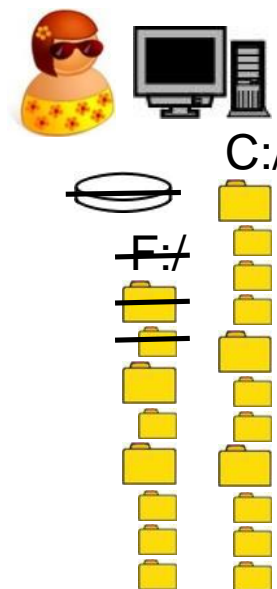
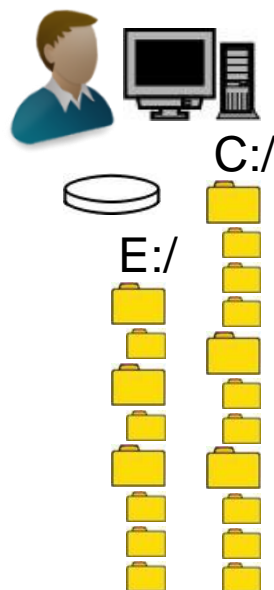
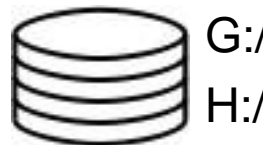
- As digital cartography and IT progressed...



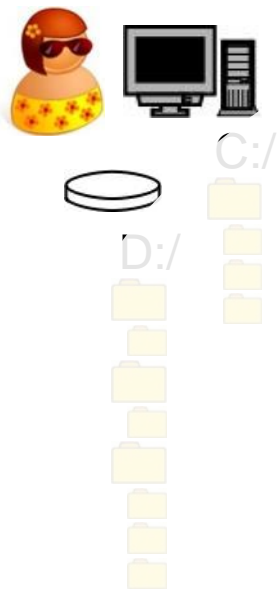
Saga NÍ – once upon a time



- As digital cartography and IT progressed...
 - Server Reykjavík
 - Server Akureyri
 - „Map server“



Saga NÍ – once upon a time



- Problems:

- Data

- difficult to find correct file (no metadata)
 - file lost (no backup)
 - ▶ time consuming ▶ expensive

- Memory space

- multiple files
 - ▶ space consuming ▶ expensive

- ▶ **Gagnaskipulag mikilvægt**

better Data Infrastructure necessary



Saga NÍ – thinking

- Starfshóp „Gagnagrunnur NÍ“
 - 4 staff members & IT-specialist & archivist
 - 30 meetings, research, visits, compare offers
 - Founded 2/2011
 - Proposals 6/2012
 - new IT system
 - same in Akureyri and Garðabær
 - all data accessible for each staff member
 - one data base
 - ArcGIS and Micro Station



Saga NÍ – doing it

- Gagnasafnsnefnd

–4 staff members & IT-specialist & archivist

- founded 10/2012
- staff-presentation 6.12.2012
- IT-system installed 10.+11.12.2012
- skipulagsdagar 12.–14.12.2012
- skipulagsdagur 30.01.2013
- skipulagsdagur 27.02.2013
- skipulagsdagur 21.03.2013
- „old data“ deleted 31.03.2013
- 2 skipulagsdagur/ár
- ábyrgðarmenn 3.04.2014
- skipulagsdagur 7.05.2014 36 meetings



Saga NÍ – doing it

- Sorting data
 - Who does what?
 - your own files
 - verkefnastjóri
 - ábyrgðarmenn



Saga NÍ – doing it

- Sorting data
 - Who does what?
 - In what order?
 - newest to oldest
 - base map data



A	B	C	D	E	F	G	H	I	J
gamalt slóð				gamalt nafn	nytt slóð			dags	starfsmenn
15.6.2005	14:56	G:\ni_gis\grodur_gis\utbr_pl	8,940	ke_utbr1506.sbn	H:\VARDVEISLA\VERKEFNI\2874_Floraislands\utbreidukort\ArcGIS_gogn			5.5.2014	ATHM
15.6.2005	14:56	G:\ni_gis\grodur_gis\utbr_pl	268	ke_utbr1506.sbx	H:\VARDVEISLA\VERKEFNI\2874_Floraislands\utbreidukort\ArcGIS_gogn			5.5.2014	ATHM
15.6.2005	14:56	G:\ni_gis\grodur_gis\utbr_pl	2,684	ke_utbr1506.shp	H:\VARDVEISLA\VERKEFNI\2874_Floraislands\utbreidukort\ArcGIS_gogn			5.5.2014	ATHM
15.6.2005	14:56	G:\ni_gis\grodur_gis\utbr_pl	852	ke_utbr1506.shx	H:\VARDVEISLA\VERKEFNI\2874_Floraislands\utbreidukort\ArcGIS_gogn			5.5.2014	ATHM
15.6.2005	17:08	G:\ni_gis\grodur_gis\utbr_pl	504.320	ke_utbr2005.mxd	H:\VARDVEISLA\VERKEFNI\2874_Floraislands\utbreidukort\kort_v			5.5.2014	ATHM
4.3.2008	14:16	G:\ni_gis\grodur_gis\utbr_pl	256.512	ke_utbr2008.mxd	deleted			5.5.2014	ATHM
15.6.2005	16:55	G:\ni_gis\grodur_gis\utbr_pl	643.072	ke_utbreidsla.doc	deleted			5.5.2014	ATHM
15.6.2005	15:14	G:\ni_gis\grodur_gis\utbr_pl	630.054	lauga_laugd.jpg	deleted			5.5.2014	ATHM
15.6.2005	16:33	G:\ni_gis\grodur_gis\utbr_pl	96.883	laugabruda.jpg	H:\VARDVEISLA\VERKEFNI\2874_Floraislands\utbreidukort\kort_r			5.5.2014	ATHM
15.6.2005	16:33	G:\ni_gis\grodur_gis\utbr_pl	268.277	laugabruda.psd	deleted			014	ATHM
15.6.2005	16:29	G:\ni_gis\grodur_gis\utbr_pl	86.332	laugadepla.jpg	H:\VARD			014	ATHM
15.6.2005	16:29	G:\ni_gis\grodur_gis\utbr_pl	259.070	laugadepla.psd	deleted			014	ATHM
15.6.2005	16:24	G:\ni_gis\grodur_gis\utbr_pl	86.414	laugarandi.jpg	H:\VARD			014	ATHM
15.6.2005	16:24	G:\ni_gis\grodur_gis\utbr_pl	243.315	laugarandi.psd	deleted			014	ATHM
15.6.2005	15:15	G:\ni_gis\grodur_gis\utbr_pl	655.763	nadur.jpg	deleted			014	ATHM
15.6.2005	16:41	G:\ni_gis\grodur_gis\utbr_pl	90.220	nadurtunga.jpg	H:\VARD			014	ATHM
15.6.2005	16:40	G:\ni_gis\grodur_gis\utbr_pl	264.889	nadurtunga.psd	deleted			014	ATHM
20.3.2006	17:57	G:\ni_gis\grodur_gis\utbr_pl	177.704	pl_valisti.ai	deleted			014	ATHM
21.3.2006	14:26	G:\ni_gis\grodur_gis\utbr_pl	37.252	pl_valisti.jpg	deleted			014	ATHM
11.4.2008	13:10	G:\ni_gis\grodur_gis\utbr_pl	162	schema.ini	deleted			014	ATHM
31.10.2008	11:02	G:\ni_gis\grodur_gis\utbr_pl	259.072	stencil_utbr2008.mxt	H:\VINN			014	ATHM
15.6.2005	14:49	G:\ni_gis\grodur_gis\utbr_pl	19.968	utbr_keny.xls	deleted			014	ATHM
15.6.2005	14:50	G:\ni_gis\grodur_gis\utbr_pl	3.682	utbr_keny1.csv	deleted			014	ATHM
15.6.2005	14:50	G:\ni_gis\grodur_gis\utbr_pl	3.682	utbr_keny2.txt	deleted			014	ATHM
20.3.2006	18:05	G:\ni_gis\grodur_gis\utbr_pl	54.272	valisti_2005.mxd	deleted			014	ATHM
21.3.2006	15:00	G:\ni_gis\grodur_gis\utbr_pl	43.837	valisti_2teg.FH10	deleted			014	ATHM
21.3.2006	15:00	G:\ni_gis\grodur_gis\utbr_pl	43.319	valisti_2teg.FH9	deleted			014	ATHM
30.3.2006	17:49	G:\ni_gis\grodur_gis\utbr_pl	19.892.860	vatnsogn.eps	H:\VARD			014	ATHM
30.3.2006	17:28	G:\ni_gis\grodur_gis\utbr_pl	13.354	vatnsogn.gif	deleted			014	ATHM
30.3.2006	17:29	G:\ni_gis\grodur_gis\utbr_pl	36.069	vatnsogn.psd	deleted			014	ATHM
		83 G:\ni_gis\grodur_gis\utbr_pl		92.155.484 bytes	deleted			014	ATHM
4.3.2008	16:10	G:\ni_gis\grodur_gis\utbr_pl\utbreidpl_ke2008	236.194	ke_pldb2008_form.psd	H:\VINN			014	ATHM
4.3.2008	15:45	G:\ni_gis\grodur_gis\utbr_pl\utbreidpl_ke2008	246.272	ke_utbr2008nytt.mxd	H:\VARD			014	ATHM
20.10.2008	16:00	G:\ni_gis\grodur_gis\utbr_pl\utbreidpl_ke2008	55.605	ke01_utbr2008.aux	deleted			014	ATHM
4.3.2008	15:35	G:\ni_gis\grodur_gis\utbr_pl\utbreidpl_ke2008	338.296	ke01_utbr2008.jpg	deleted			014	ATHM
20.10.2008	16:00	G:\ni_gis\grodur_gis\utbr_pl\utbreidpl_ke2008	105	ke01_utbr2008.jpg.aux.xml	deleted			014	ATHM
20.10.2008	16:00	G:\ni_gis\grodur_gis\utbr_pl\utbreidpl_ke2008	3.915.957	ke01_utbr2008.rrd	deleted			014	ATHM
4.3.2008	15:37	G:\ni_gis\grodur_gis\utbr_pl\utbreidpl_ke2008	302.593	ke02_utbr2008.jpg	deleted			014	ATHM
4.3.2008	15:38	G:\ni_gis\grodur_gis\utbr_pl\utbreidpl_ke2008	314.218	ke03_utbr2008.jpg	deleted			014	ATHM
4.3.2008	15:31	G:\ni_gis\grodur_gis\utbr_pl\utbreidpl_ke2008	30.108	ke2_plontudb2008.dbf	H:\VARD			014	ATHM
4.3.2008	15:31	G:\ni_gis\grodur_gis\utbr_pl\utbreidpl_ke2008	12.092	ke2_plontudb2008.sbn	H:\VARD			014	ATHM
4.3.2008	15:31	G:\ni_gis\grodur_gis\utbr_pl\utbreidpl_ke2008	716	ke2_plontudb2008.sbx	H:\VARD			014	ATHM
4.3.2008	15:31	G:\ni_gis\grodur_gis\utbr_pl\utbreidpl_ke2008	12.508	ke2_plontudb2008.shp	H:\VARD			014	ATHM
4.3.2008	15:31	G:\ni_gis\grodur_gis\utbr_pl\utbreidpl_ke2008	3.668	ke2_plontudb2008.shx	H:\VARD			014	ATHM
4.3.2008	16:08	G:\ni_gis\grodur_gis\utbr_pl\utbreidpl_ke2008	64.822	ke2008_ASPLVIR.jpg	H:\VARDVEISLA\VERKEFNI\2874_Floraislands\utbreidukort\kort_r			5.5.2014	ATHM

Find and Replace

Find Replace

Find what:

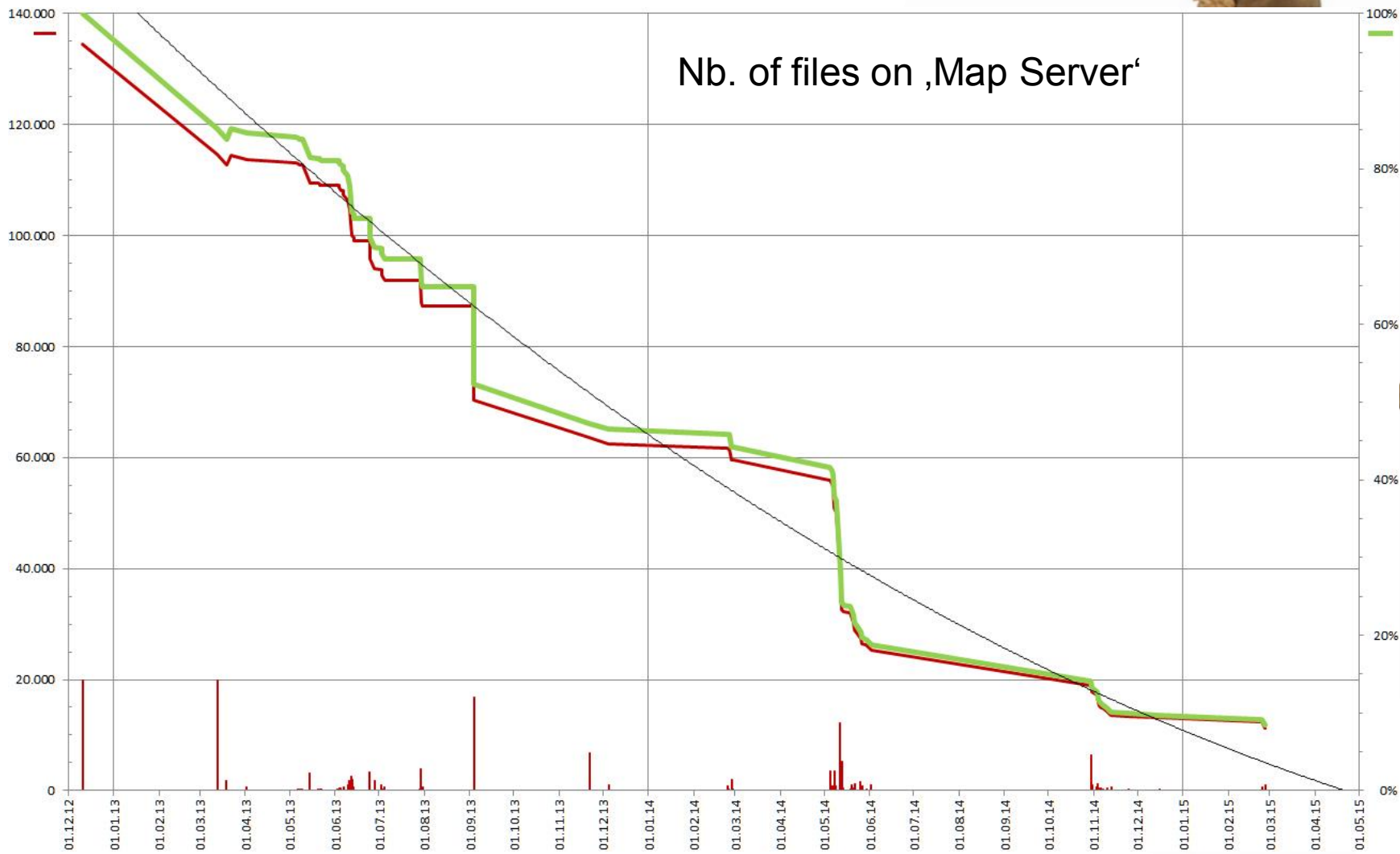
Options >>

Book	Sheet	Name	Cell	Value	Formula
gamla_ni_gis3.xlsx	gamla_ni_gis		=\$E\$29735	jokull.shp	
gamla_ni_gis3.xlsx	gamla_ni_gis		=\$E\$29903	jokull.shp	
gamla_ni_gis3.xlsx	gamla_ni_gis		=\$E\$30164	jokull.shp	
gamla_ni_gis3.xlsx	gamla_ni_gis		=\$E\$54021	jokull.shp	
gamla_ni_gis3.xlsx	gamla_ni_gis		=\$E\$54231	jokull.shp	
gamla_ni_gis3.xlsx	gamla_ni_gis		=\$E\$61297	jokull.shp	
gamla_ni_gis3.xlsx	gamla_ni_gis		=\$E\$64427	jokull.shp	
gamla_ni_gis3.xlsx	gamla_ni_gis		=\$E\$118926	jokull.shp	
gamla_ni_gis3.xlsx	gamla_ni_gis		=\$E\$119134	jokull.shp	
gamla_ni_gis3.xlsx	gamla_ni_gis		=\$E\$119800	jokull.shp	
gamla_ni_gis3.xlsx	gamla_ni_gis		=\$E\$119871	jokull.shp	
gamla_ni_gis3.xlsx	gamla_ni_gis		=\$E\$130953	jokull.shp	

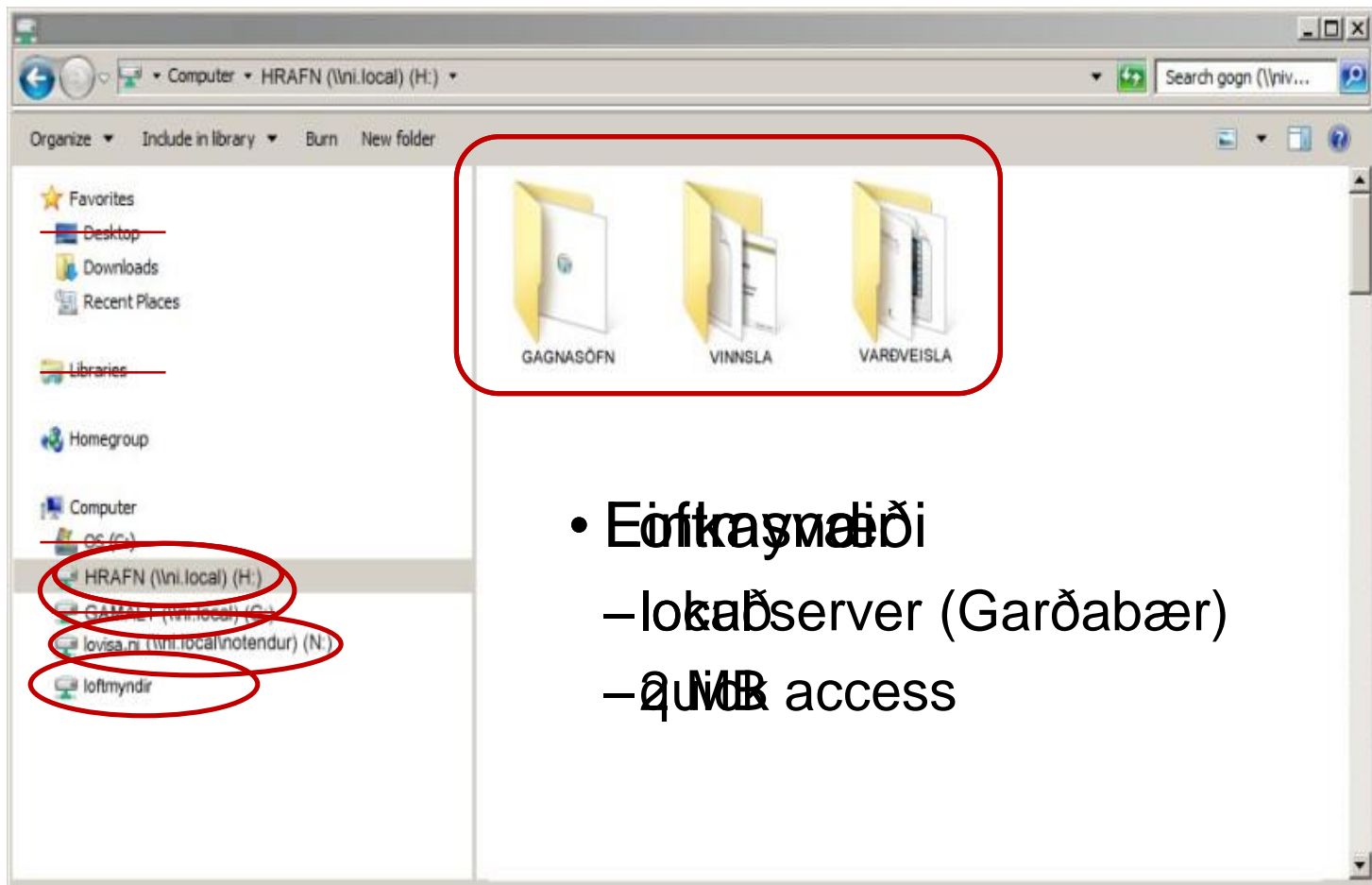
12 cell(s) found



Saga NÍ – doing it



Saga NÍ – Skipulag gagna



Saga NÍ – Skipulag gagna

HRAFN

GAGNASÖFN

- öll grunngögn
- öll gagnasöfn
- öll gagnagrunnar

VINNSLA

- úrvinnsla allra gagna

VARÐVEISLA

- langtímageymsla

A f r i t u n

Aðgangsstýring

Opið

Lesaðgangur



Saga NÍ – Skipulag gagna



VINNSLA

-  FÉLAGSMÁL
-  FORM
-  MIÐLUN
-  RÁÐGJÖF
-  SAMSTARF
-  STJÖRN
-  VERKEFNI
-  ÞJÓNUSTA

HRAFN

VINNSLA

- úrvinnsla allra gagna
 - administration
 - nefndarstörf
 - rannsóknarverkefni
 - kortagerð
 - skýrslur...

VARÐVEISLA

- langtímageymsla



Saga NÍ – Skipulag gagna



VINNSLA

-  FÉLAGSMÁL
-  FORM
-  MIÐLUN
-  RÁÐGJÖF
-  SAMSTARF
-  STJÖRN
-  VERKEFNI
-  ÞJÓNUSTA

HRAFN

VINNSLA

- úrvinnsla allra gagna
- ekki til langs tíma
- 1 verkefni = 1 mappa
- númeri úr VinnuStund
- starfsmenn

VARÐVEISLA

- langtímageymsla



Saga NÍ – Skipulag gagna



VINNSLA

-  FÉLAGSMÁL
-  FORM
-  MIÐLUN
-  RÁÐGJÖF
-  SAMSTARF
-  STJÖRN
-  VERKEFNI
-  ÞJÖNUSTA

HRAFN

VINNSLA

- úrvinnsla allra gagna
- ekki til langs tíma
- 1 verkefni = 1 mappa
- númeri úr VinnuStund
- ekki eftir starfsmönnum



2861-Myraeldar



Útgáfa

Skýrsla
Kort
Fyrirlestur



Úrvinnsla

Jarðfræði
Fuglar
Gróður
Smádýr
Landupplýsingar



Verkstjórn



Saga NÍ – Skipulag gagna

HRAFN

GAGNASÖFN

– öll grunngögn

VINNSLA

-  FÉLAGSMÁL
-  FORM
-  MIÐLUN
-  RÁÐGJÖF
-  SAMSTARF
-  STJÓRN
-  VERKEFNI
-  ÞJÓNUSTA

VARÐVEISLA

-  FÉLAGSMÁL
-  FORM
-  MIÐLUN
-  RÁÐGJÖF
-  SAMSTARF
-  STJÓRN
-  VERKEFNI
-  ÞJÓNUSTA



Saga NÍ – Vinnsla

HRAFN

GAGNASÖFN

VINNSLA

VARÐVEISLA

– grunngögn

- new folder 
- collect data
- working
- project finished
- sorting data
- deleting data

– results
– project metadata



Saga NÍ – Requirements

- authority
 - everybody takes part
 - ábyrgðarmenn
 - leiðbeiningar og verklagsreglur



Saga NÍ – Requirements

- authority
- time
 - skipulagsdagur



Saga NÍ – Requirements

- authority
- time
- would have helped
 - GIS data in ÍST120:2012
 - metadata



Saga NÍ – Requirements

- authority
- time
- would have helped
- communication
- self-discipline
 - correct name
 - staðall ÍST120:2012
 - lýsigögn
 - follow up



Saga NÍ – Requirements

- authority
- time
- would have helped
- communication
- self-discipline
- system to follow up
 - GIS data only part of project



Saga NÍ – Pros & Cons

☺ people happy

☺ data

- secure

- easy to find

- only 1 copy

- no need to send files via e-mail

☹ sorting finished project

☹ project numbers random

☹ open access

- folders vanished/moved

- folder locked



Saga NÍ – Vision

- „one“ database
- connect DB with GIS work
- project metadata
 - searchable
- make NÍ data available
 - homepage
 - vefsjá



Takk fyrir

A photograph showing a person's hands holding a white rectangular sign with the word "Hjálp" written in black cursive script. The hands are positioned above a large, conical pile of crumpled white paper that fills the lower two-thirds of the frame. The background is plain white.

Hjálp

